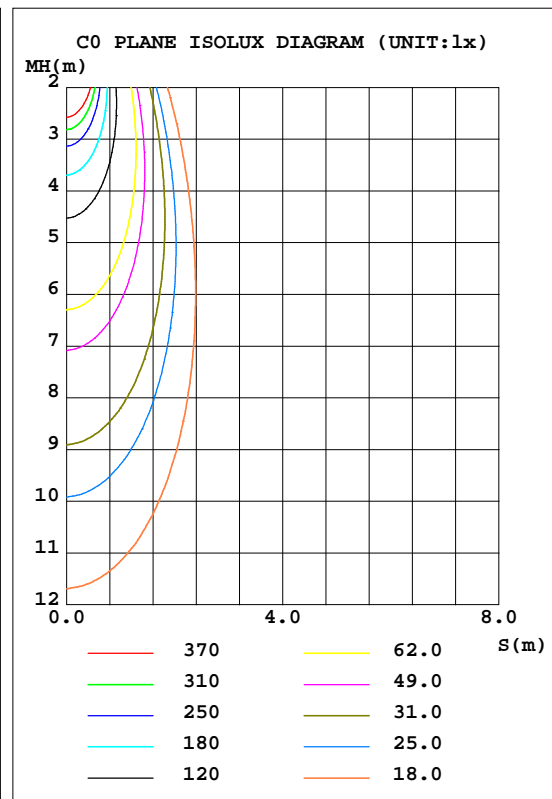
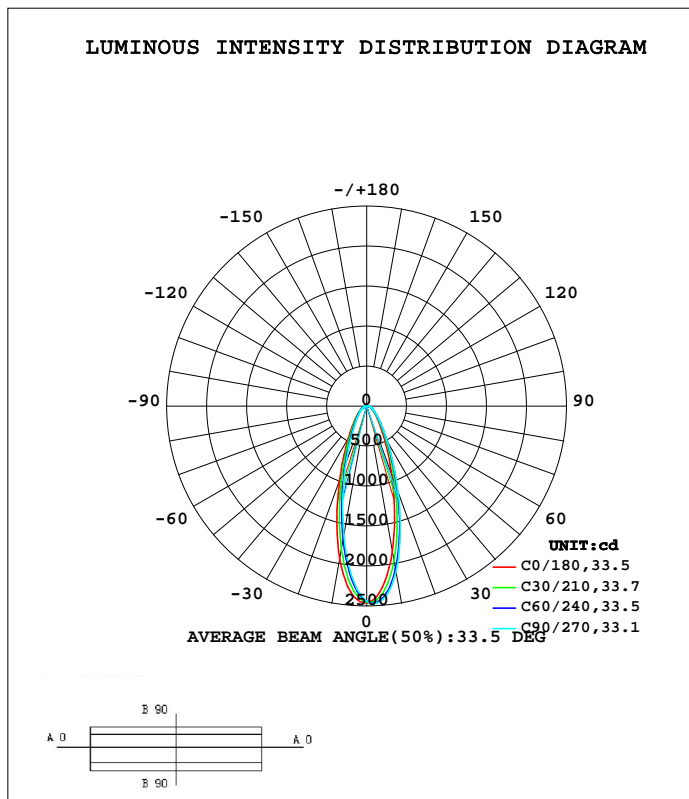


LUMINAIRE PHOTOMETRIC TEST REPORT

Test:U:220.08V I:0.0732A P:15.072W PF:0.9353 Freq:50.00Hz Lamp Flux:1425.4x1 lm		
NAME: UN-AC220-2835-60-14-940-W16-T301-UD	TYPE:	WEIGHT:
SPEC.:	DIM.:	SERIAL No.:
MFR.:	SUR.:1000*16mm	

DATA OF LAMP		PHOTOMETRIC DATA Eff: 94.57 lm/W			
MODEL		I <sub>max</sub> (cd)	2471	S/MH(C0/180)	0.56
NOMINAL POWER(W)		LOR(%)	100.0	S/MH(C90/270)	0.47
RATED VOLTAGE(V)	--	TOTAL FLUX(lm)	1425.4	η UP, DN(C0-180)	0.0,55.6
NOMINAL FLUX(lm)	1425.4	CIE CLASS	DIRECT	η UP, DN(C180-360)	0.0,44.4
LAMPS INSIDE	1	η up(%)	0.0	CIBSE SHR NOM	0.50
TEST VOLTAGE(V)	--	η down(%)	100.0	CIBSE SHR MAX	0.60



C Range: 0 - 360DEG  
 C Interval: 15.0DEG  
 Test Speed: HIGH  
 Temperature:25.3DEG  
 Operators:XIAOMI  
 Test Date:2023-04-21

γ Range: 0 - 90DEG  
 γ Interval: 1.0DEG  
 Test System:EVERFINE GO-3000H\_V1 SYSTEM V2.00.411  
 Humidity:65.0%  
 Test Distance:9.000m [K=1.0000]  
 Remarks:

ZONAL FLUX DIAGRAM

ZONAL FLUX DIAGRAM:

$\gamma$	C0	C45	C90	C135	C180	C225	C270	C315	$\gamma$	$\Phi$ zone	$\Phi$ total	%lum,lamp
10	1848	2028	2113	2069	1945	1753	1647	1668	0- 10	204.9	204.9	14.4,14.4
20	925.2	1087	1151	1113	999.6	844.4	756.9	779.2	10- 20	382.6	587.5	41.2,41.2
30	419.3	507.7	525.9	511.9	459.1	375.2	333.3	341.7	20- 30	297.5	885.0	62.1,62.1
40	217.2	258.6	264.0	258.5	236.2	197.8	175.9	180.6	30- 40	193.6	1079	75.7,75.7
50	128.2	149.8	151.9	149.5	137.5	118.8	107.6	109.6	40- 50	132.5	1211	85,85
60	80.74	91.69	94.36	91.36	84.31	75.04	70.48	70.97	50- 60	93.37	1305	91.5,91.5
70	42.55	58.20	60.30	57.62	43.96	47.13	44.15	45.67	60- 70	64.67	1369	96.1,96.1
80	17.16	32.66	33.39	32.03	17.60	24.77	22.09	24.13	70- 80	39.00	1408	98.8,98.8
90	1.266	10.71	11.78	10.87	0.6928	7.211	8.330	7.748	80- 90	17.22	1425	100,100
100									90-100			
110									100-110			
120									110-120			
130									120-130			
140									130-140			
150									140-150			
160									150-160			
170									160-170			
180									170-180			
DEG	LUMINOUS INTENSITY:cd									UNIT:lm		

Conical surface Flux(90deg): 1150.7 lm

%lum = 80.7%  
 %lamp = 80.7%

Conical surface Flux(120deg): 1304.5 lm

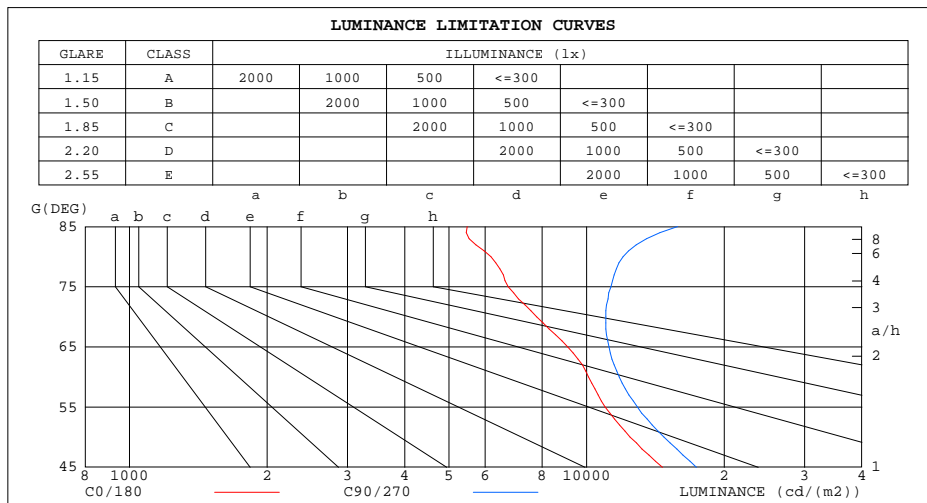
%lum = 91.5%  
 %lamp = 91.5%

C Range: 0 - 360DEG  
 C Interval: 15.0DEG  
 Test Speed: HIGH  
 Temperature:25.3DEG  
 Operators:XIAOMI  
 Test Date:2023-04-21

$\gamma$  Range: 0 - 90DEG  
 $\gamma$  Interval: 1.0DEG  
 Test System:EVERFINE GO-3000H\_V1 SYSTEM V2.00.411  
 Humidity:65.0%  
 Test Distance:9.000m [K=1.0000]  
 Remarks:

LUMINANCE LIMITATION CURVES

Test:U:220.08V I:0.0732A P:15.072W PF:0.9353 Freq:50.00Hz Lamp Flux:1425.4x1 lm		
NAME: UN-AC220-2835-60-14-940-W16-T301-UD	TYPE:	WEIGHT:
SPEC.:	DIM.:	SERIAL No.:
MFR.:	SUR.:1000*16mm	



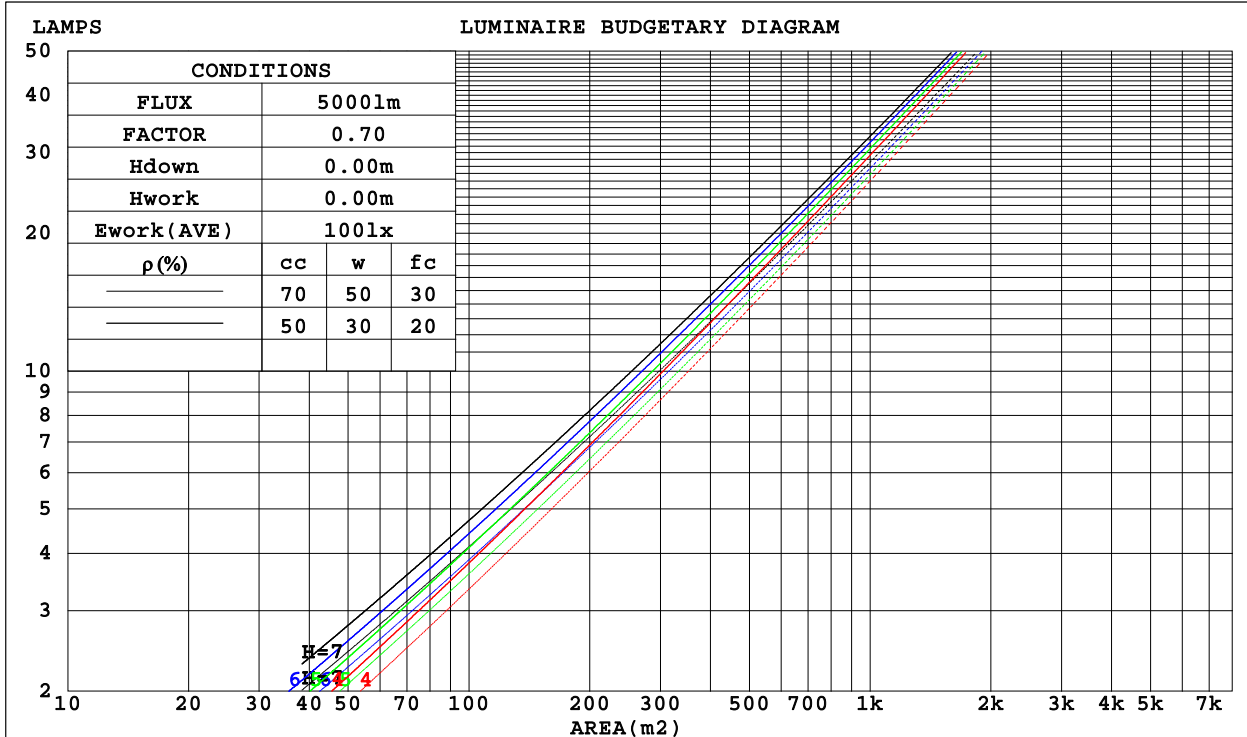
C Range: 0 - 360DEG  
 C Interval: 15.0DEG  
 Test Speed: HIGH  
 Temperature:25.3DEG  
 Operators:XIAOMI  
 Test Date:2023-04-21

γ Range: 0 - 90DEG  
 γ Interval: 1.0DEG  
 Test System:EVERFINE GO-3000H\_V1 SYSTEM V2.00.411  
 Humidity:65.0%  
 Test Distance:9.000m [K=1.0000]  
 Remarks:

CU AND LUMINAIRE BUDGETARY ESTIMATE DIAGRAM

Test:U:220.08V I:0.0732A P:15.072W PF:0.9353 Freq:50.00Hz Lamp Flux:1425.4x1 lm		
NAME: UN-AC220-2835-60-14-940-W16-T301-UD	TYPE:	WEIGHT:
SPEC.:	DIM.:	SERIAL No.:
MFR.:	SUR.:1000*16mm	

$\rho_{cc}$	80%			70%			50%			30%			10%			0
$\rho_w$	50%	30%	10%	50%	30%	10%	50%	30%	10%	50%	30%	10%	50%	30%	10%	0
$\rho_{fc}$	20%			20%			20%			20%			20%			0
RCR	RCR:Room Cavity Ratio						Coefficients of Utilization(CU)									
0.0	1.19	1.19	1.19	1.16	1.16	1.16	1.11	1.11	1.11	1.06	1.06	1.06	1.02	1.02	1.02	.00
1.0	1.09	1.05	1.03	1.06	1.04	1.01	1.02	.00	.98	.98	.97	.95	.95	.94	.92	.90
2.0	.99	.95	.90	.98	.93	.89	.94	.91	.87	.91	.88	.86	.88	.86	.84	.82
3.0	.92	.86	.81	.90	.85	.80	.87	.83	.79	.85	.81	.78	.83	.79	.77	.75
4.0	.85	.79	.74	.84	.78	.73	.81	.76	.72	.79	.75	.72	.77	.74	.71	.69
5.0	.79	.73	.68	.78	.72	.67	.76	.71	.67	.75	.70	.66	.73	.69	.66	.64
6.0	.74	.68	.63	.73	.67	.63	.72	.66	.62	.70	.65	.62	.69	.65	.61	.60
7.0	.70	.63	.59	.69	.63	.58	.68	.62	.58	.66	.61	.58	.65	.61	.57	.56
8.0	.66	.59	.55	.65	.59	.55	.64	.59	.55	.63	.58	.54	.62	.57	.54	.53
9.0	.62	.56	.52	.62	.56	.52	.61	.55	.52	.60	.55	.51	.59	.55	.51	.50
10.0	.59	.53	.49	.59	.53	.49	.58	.53	.49	.57	.52	.49	.56	.52	.49	.47



C Range: 0 - 360DEG  
 C Interval: 15.0DEG  
 Test Speed: HIGH  
 Temperature:25.3DEG  
 Operators:XIAOMI  
 Test Date:2023-04-21

$\gamma$  Range: 0 - 90DEG  
 $\gamma$  Interval: 1.0DEG  
 Test System:EVERFINE GO-3000H\_V1 SYSTEM V2.00.411  
 Humidity:65.0%  
 Test Distance:9.000m [K=1.0000]  
 Remarks:

WEC AND CCEC

Test:U:220.08V I:0.0732A P:15.072W PF:0.9353 Freq:50.00Hz Lamp Flux:1425.4x1 lm		
NAME: UN-AC220-2835-60-14-940-W16-T301-UD	TYPE:	WEIGHT:
SPEC.:	DIM.:	SERIAL No.:
MFR.:	SUR.:1000*16mm	

pcc	80%			70%			50%			30%			10%			0
pw	50%	30%	10%	50%	30%	10%	50%	30%	10%	50%	30%	10%	50%	30%	10%	0
pfc	20%			20%			20%			20%			20%			0
RCR	RCR:Room Cavity Ratio						Wall Exitance Coefficients(WEC)									
0.0																
1.0	.220	.125	.040	.214	.122	.039	.201	.115	.037	.189	.109	.035	.178	.103	.033	
2.0	.206	.113	.035	.200	.110	.034	.189	.105	.033	.179	.100	.031	.170	.096	.030	
3.0	.192	.102	.031	.187	.100	.030	.177	.096	.029	.168	.092	.028	.160	.089	.027	
4.0	.179	.093	.027	.174	.091	.027	.166	.088	.026	.159	.085	.026	.151	.082	.025	
5.0	.167	.085	.025	.163	.084	.024	.156	.081	.024	.149	.079	.023	.143	.077	.023	
6.0	.157	.079	.022	.153	.077	.022	.147	.075	.022	.141	.073	.022	.136	.071	.021	
7.0	.148	.073	.021	.145	.072	.021	.139	.070	.020	.134	.069	.020	.129	.067	.020	
8.0	.139	.068	.019	.137	.067	.019	.132	.066	.019	.127	.064	.019	.123	.063	.018	
9.0	.132	.064	.018	.130	.063	.018	.125	.062	.018	.121	.061	.017	.117	.060	.017	
10.0	.125	.060	.017	.123	.060	.017	.119	.058	.016	.116	.057	.016	.112	.056	.016	

pcc	80%			70%			50%			30%			10%			0
pw	50%	30%	10%	50%	30%	10%	50%	30%	10%	50%	30%	10%	50%	30%	10%	0
pfc	20%			20%			20%			20%			20%			0
RCR	RCR:Room Cavity Ratio						Ceiling Cavity Exitance Coefficients(CCEC)									
0.0	.190	.190	.190	.163	.163	.163	.111	.111	.111	.064	.064	.064	.020	.020	.020	
1.0	.174	.157	.141	.149	.135	.122	.102	.093	.084	.059	.054	.049	.019	.017	.016	
2.0	.161	.132	.108	.138	.114	.094	.094	.079	.065	.054	.046	.038	.017	.015	.012	
3.0	.149	.114	.085	.128	.098	.074	.088	.068	.052	.051	.040	.031	.016	.013	.010	
4.0	.139	.099	.069	.120	.086	.060	.082	.060	.042	.048	.035	.025	.015	.011	.008	
5.0	.131	.088	.057	.112	.076	.049	.077	.053	.035	.045	.031	.021	.014	.010	.007	
6.0	.123	.079	.047	.106	.068	.041	.073	.048	.029	.042	.028	.017	.014	.009	.006	
7.0	.116	.071	.040	.100	.062	.035	.069	.043	.025	.040	.026	.015	.013	.008	.005	
8.0	.110	.065	.035	.095	.057	.030	.065	.040	.021	.038	.023	.013	.012	.008	.004	
9.0	.104	.060	.030	.090	.052	.026	.062	.037	.019	.036	.022	.011	.012	.007	.004	
10.0	.099	.056	.027	.085	.048	.023	.059	.034	.016	.035	.020	.010	.011	.007	.003	

C Range: 0 - 360DEG  
 C Interval: 15.0DEG  
 Test Speed: HIGH  
 Temperature:25.3DEG  
 Operators:XIAOMI  
 Test Date:2023-04-21

γ Range: 0 - 90DEG  
 γ Interval: 1.0DEG  
 Test System:EVERFINE GO-3000H\_V1 SYSTEM V2.00.411  
 Humidity:65.0%  
 Test Distance:9.000m [K=1.0000]  
 Remarks:

UGR(Unified Glare Rating) Table

Test:U:220.08V I:0.0732A P:15.072W PF:0.9353 Freq:50.00Hz Lamp Flux:1425.4x1 lm										
NAME: UN-AC220-2835-60-14-940-W16-T301-UD					TYPE:			WEIGHT:		
SPEC.:					DIM.:			SERIAL No.:		
MFR.:					SUR.:1000*16mm					
ceiling/cavity	0.7	0.7	0.5	0.5	0.3	0.7	0.7	0.5	0.5	0.3
walls	0.5	0.3	0.5	0.3	0.3	0.5	0.3	0.5	0.3	0.3
working plane	0.2	0.2	0.2	0.2	0.2	0.2	0.2	0.2	0.2	0.2
Room dimensions	Viewed crosswise					Viewed endwise				
x = 2H y = 2H	19.1	20.2	19.4	20.4	20.6	19.9	20.9	20.1	21.1	21.3
3H	20.0	21.0	20.3	21.2	21.5	21.0	22.0	21.3	22.2	22.4
4H	20.4	21.3	20.6	21.5	21.8	21.6	22.6	21.9	22.8	23.0
6H	20.6	21.5	20.9	21.7	22.0	22.2	23.1	22.5	23.4	23.6
8H	20.7	21.5	21.0	21.8	22.1	22.5	23.3	22.8	23.6	23.9
12H	20.7	21.6	21.1	21.8	22.1	22.8	23.6	23.1	23.9	24.2
4H 2H	19.7	20.6	19.9	20.8	21.1	20.2	21.2	20.5	21.4	21.6
3H	20.8	21.6	21.1	21.9	22.2	21.7	22.5	22.0	22.8	23.1
4H	21.3	22.0	21.6	22.3	22.7	22.4	23.2	22.8	23.5	23.8
6H	21.7	22.3	22.0	22.7	23.0	23.2	23.9	23.6	24.2	24.6
8H	21.8	22.4	22.2	22.8	23.1	23.6	24.2	24.0	24.5	24.9
12H	21.9	22.5	22.3	22.8	23.2	23.9	24.5	24.3	24.9	25.3
8H 4H	21.7	22.3	22.1	22.7	23.0	22.7	23.3	23.1	23.7	24.0
6H	22.3	22.8	22.7	23.2	23.6	23.6	24.2	24.1	24.6	25.0
8H	22.6	23.1	23.0	23.5	23.9	24.1	24.6	24.6	25.0	25.5
12H	22.8	23.2	23.3	23.7	24.1	24.7	25.1	25.2	25.5	26.0
12H 4H	21.7	22.3	22.1	22.7	23.1	22.7	23.3	23.1	23.7	24.1
6H	22.5	22.9	22.9	23.4	23.8	23.7	24.2	24.2	24.6	25.1
8H	22.9	23.3	23.3	23.7	24.2	24.3	24.7	24.8	25.1	25.6
Variations with the observer position at spacings:										
S = 1.0H	+ 0.3 / - 0.4					+ 0.3 / - 0.3				
1.5H	+ 0.2 / - 0.3					+ 0.2 / - 0.2				
2.0H	+ 0.4 / - 0.4					+ 0.4 / - 0.3				

CIE Pub.117, 1425 lm Total Lamp Luminous Flux Corrected (8log(F/F0) = 1.2)  
 Area: 0.016 m2

C Range: 0 - 360DEG  
 C Interval: 15.0DEG  
 Test Speed: HIGH  
 Temperature:25.3DEG  
 Operators:XIAOMI  
 Test Date:2023-04-21

γ Range: 0 - 90DEG  
 γ Interval: 1.0DEG  
 Test System:EVERFINE GO-3000H\_V1 SYSTEM V2.00.411  
 Humidity:65.0%  
 Test Distance:9.000m [K=1.0000]  
 Remarks:

UTILIZATION FACTORS TABLE

Test:U:220.08V I:0.0732A P:15.072W PF:0.9353 Freq:50.00Hz Lamp Flux:1425.4x1 lm		
NAME: UN-AC220-2835-60-14-940-W16-T301-UD	TYPE:	WEIGHT:
SPEC.:	DIM.:	SERIAL No.:
MFR.:	SUR.:1000*16mm	

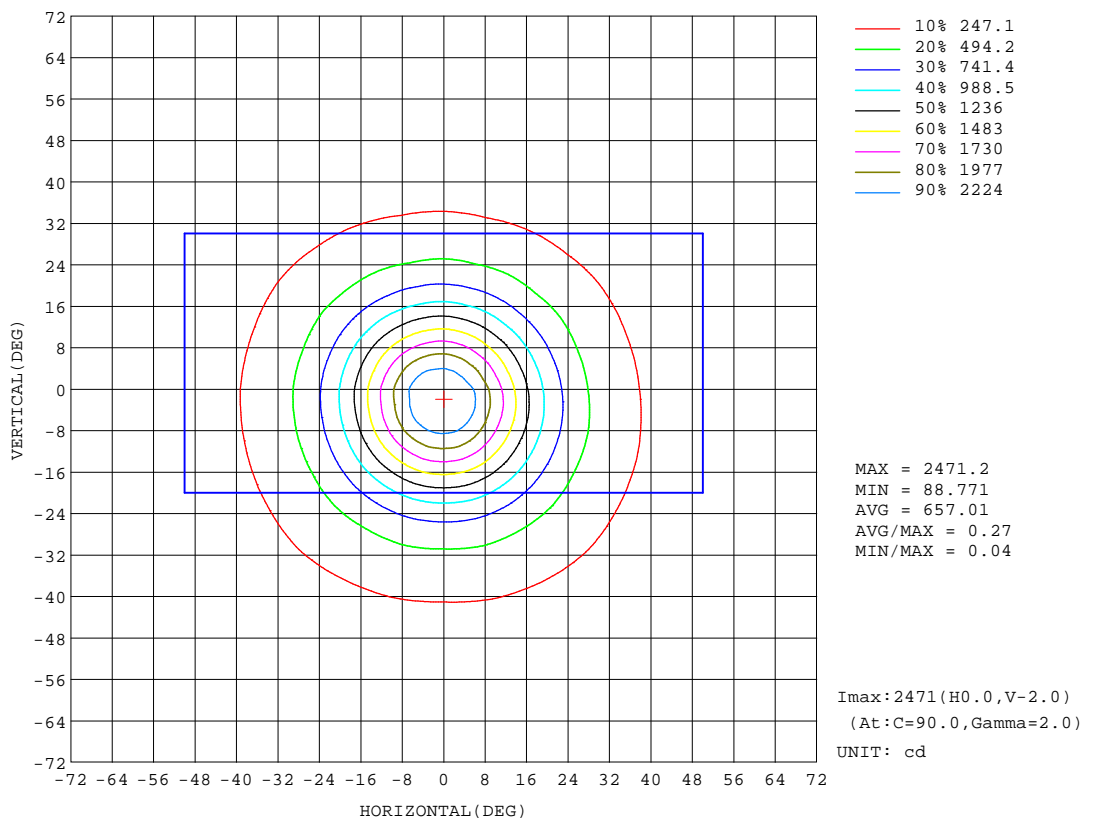
REFLECTANCE										
Ceiling	0.8	0.8	0.8	0.7	0.7	0.7	0.5	0.5	0.5	0
Walls	0.7	0.5	0.3	0.7	0.5	0.3	0.7	0.5	0.3	0
Working plane	0.2	0.2	0.2	0.2	0.2	0.2	0.2	0.2	0.2	0
ROOM INDEX	UTILIZATION FACTORS(PERCENT) k(RI) x RCR = 5									
k = 0.60	77	68	63	76	68	63	75	68	63	58
0.80	85	77	72	84	77	72	83	76	71	67
1.00	91	83	78	90	83	78	88	83	77	72
1.25	96	89	84	95	88	84	92	87	83	77
1.50	99	93	88	98	92	88	95	90	87	81
2.00	104	98	93	102	97	93	99	95	91	85
2.50	106	101	97	104	99	96	101	97	94	87
3.00	108	103	100	106	102	99	103	99	96	89
4.00	111	107	104	109	105	102	105	102	100	92
5.00	113	109	107	110	107	105	106	104	102	94
ROOM INDEX	UF(total)									Direct
According to DIN EN 13032-2 2004			Suspended				SHRNOM = 1.25			

C Range: 0 - 360DEG  
 C Interval: 15.0DEG  
 Test Speed: HIGH  
 Temperature:25.3DEG  
 Operators:XIAOMI  
 Test Date:2023-04-21

γ Range: 0 - 90DEG  
 γ Interval: 1.0DEG  
 Test System:EVERFINE GO-3000H\_V1 SYSTEM V2.00.411  
 Humidity:65.0%  
 Test Distance:9.000m [K=1.0000]  
 Remarks:

ISOCANDELA DIAGRAM

Test:U:220.08V I:0.0732A P:15.072W PF:0.9353 Freq:50.00Hz Lamp Flux:1425.4x1 lm		
NAME: UN-AC220-2835-60-14-940-W16-T301-UD	TYPE:	WEIGHT:
SPEC.:	DIM.:	SERIAL No.:
MFR.:	SUR.:1000*16mm	



C Range: 0 - 360DEG  
 C Interval: 15.0DEG  
 Test Speed: HIGH  
 Temperature:25.3DEG  
 Operators:XIAOMI  
 Test Date:2023-04-21

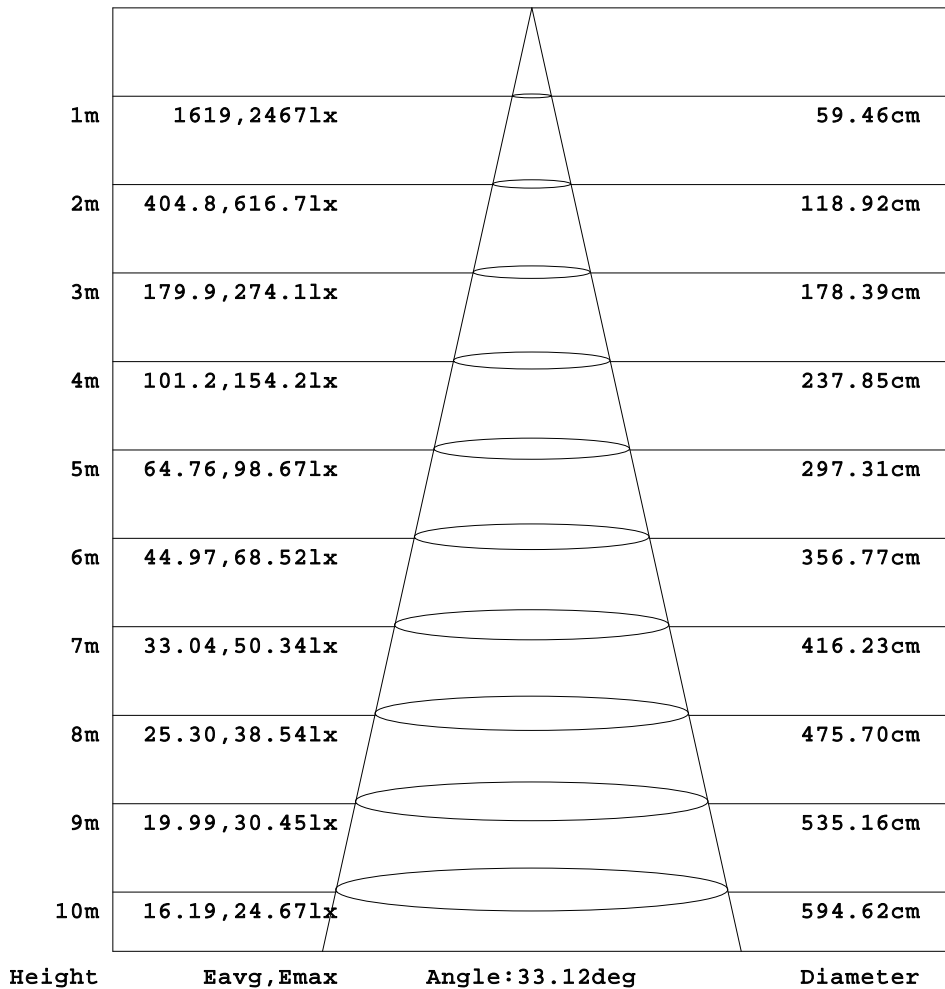
γ Range: 0 - 90DEG  
 γ Interval: 1.0DEG  
 Test System:EVERFINE GO-3000H\_V1 SYSTEM V2.00.411  
 Humidity:65.0%  
 Test Distance:9.000m [K=1.0000]  
 Remarks:



AAI Figure

Test:U:220.08V I:0.0732A P:15.072W PF:0.9353 Freq:50.00Hz Lamp Flux:1425.4x1 lm		
NAME: UN-AC220-2835-60-14-940-W16-T301-UD	TYPE:	WEIGHT:
SPEC.:	DIM.:	SERIAL No.:
MFR.:	SUR.:1000*16mm	

Flux out:475.4 lm



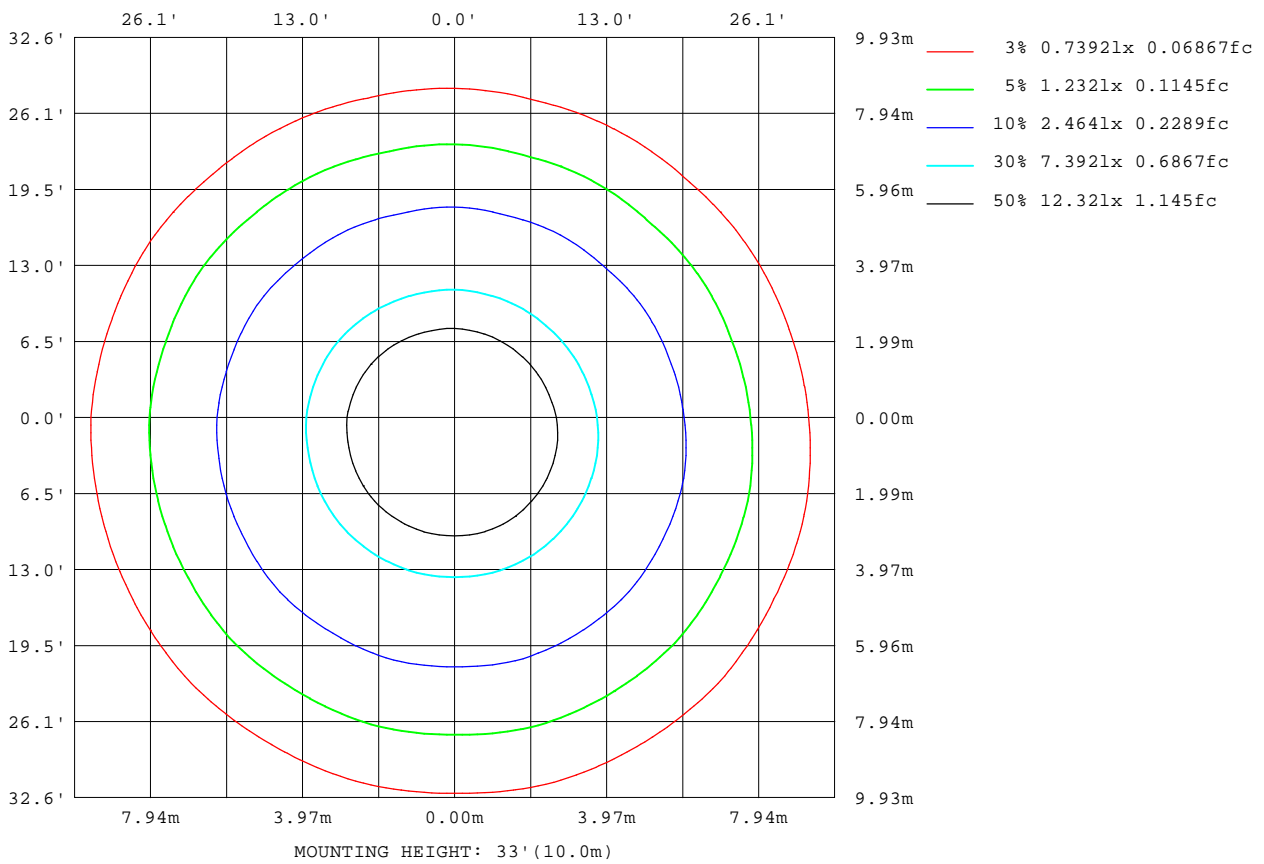
Note:The Curves indicate the illuminated area and the average illumination when the luminaire is at different distance.

C Range: 0 - 360DEG  
 C Interval: 15.0DEG  
 Test Speed: HIGH  
 Temperature:25.3DEG  
 Operators:XIAOMI  
 Test Date:2023-04-21

γ Range: 0 - 90DEG  
 γ Interval: 1.0DEG  
 Test System:EVERFINE GO-3000H\_V1 SYSTEM V2.00.411  
 Humidity:65.0%  
 Test Distance:9.000m [K=1.0000]  
 Remarks:

ISOLUX DIAGRAM

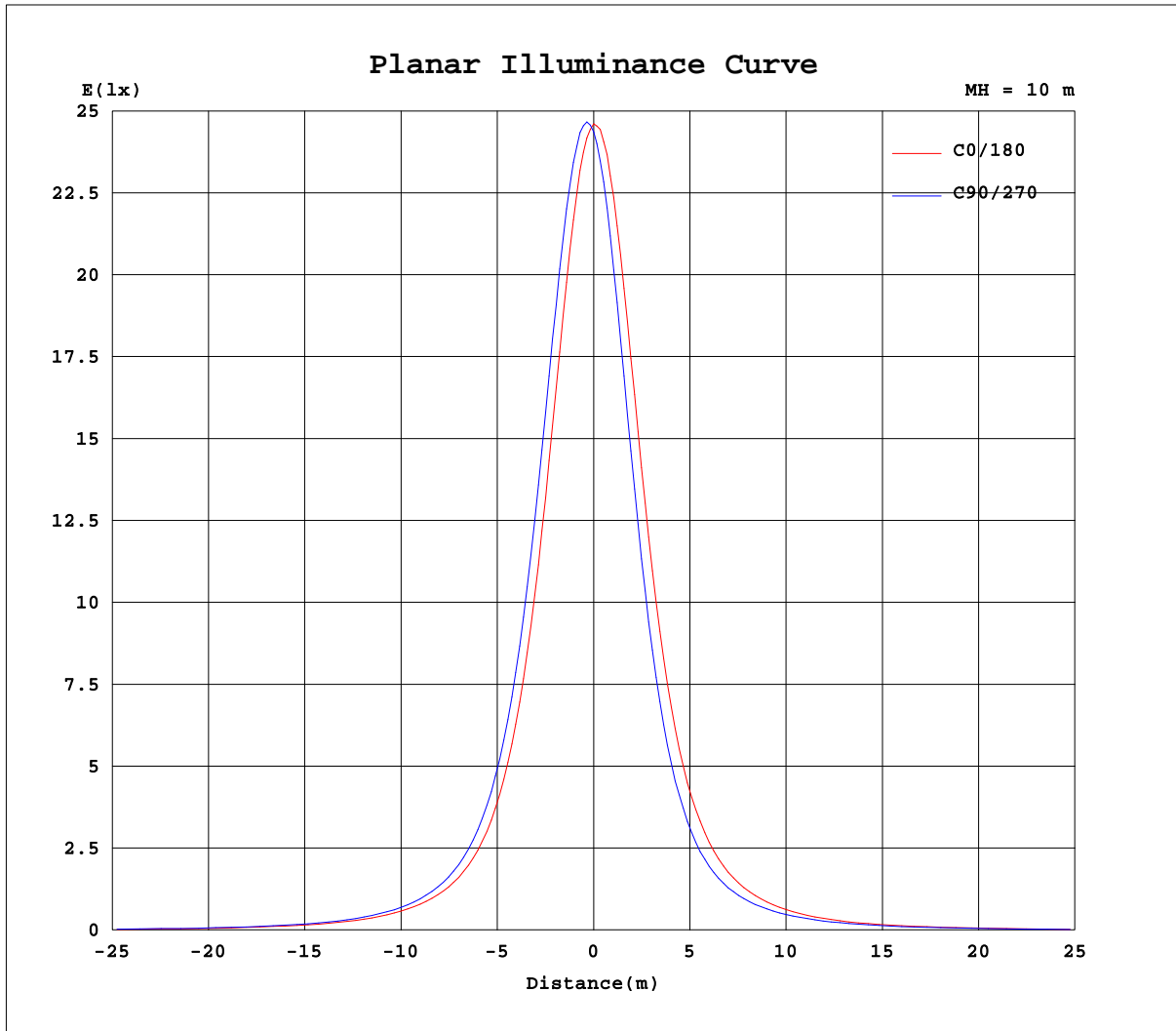
Test:U:220.08V I:0.0732A P:15.072W PF:0.9353 Freq:50.00Hz Lamp Flux:1425.4x1 lm		
NAME: UN-AC220-2835-60-14-940-W16-T301-UD	TYPE:	WEIGHT:
SPEC.:	DIM.:	SERIAL No.:
MFR.:	SUR.:1000*16mm	



C Range: 0 - 360DEG  
 C Interval: 15.0DEG  
 Test Speed: HIGH  
 Temperature: 25.3DEG  
 Operators: XIAOMI  
 Test Date: 2023-04-21

γ Range: 0 - 90DEG  
 γ Interval: 1.0DEG  
 Test System: EVERFINE GO-3000H\_V1 SYSTEM V2.00.411  
 Humidity: 65.0%  
 Test Distance: 9.000m [K=1.0000]  
 Remarks:

### Planar Illuminance Curve



C Range: 0 - 360DEG  
C Interval: 15.0DEG  
Test Speed: HIGH  
Temperature: 25.3DEG  
Operators: XIAOMI  
Test Date: 2023-04-21

$\gamma$  Range: 0 - 90DEG  
 $\gamma$  Interval: 1.0DEG  
Test System: EVERFINE GO-3000H\_V1 SYSTEM V2.00.411  
Humidity: 65.0%  
Test Distance: 9.000m [K=1.0000]  
Remarks:

LUMINOUS DISTRIBUTION INTENSITY DATA

Test:U:220.08V I:0.0732A P:15.072W PF:0.9353 Freq:50.00Hz Lamp Flux:1425.4x1 lm		
NAME: UN-AC220-2835-60-14-940-W16-T301-UD	TYPE:	WEIGHT:
SPEC.:	DIM.:	SERIAL No.:
MFR.:	SUR.:1000*16mm	

Table--1

UNIT: cd

C(DEG) γ (DEG)	0	15	30	45	60	75	90	105	120	135	150	165	180	195	210	225	240	255	270
0	2461	2457	2455	2447	2437	2433	2437	2433	2432	2422	2420	2421	2461	2457	2455	2447	2437	2433	2437
5	2275	2307	2345	2375	2401	2420	2420	2419	2407	2394	2366	2332	2329	2290	2250	2215	2175	2150	2143
10	1848	1917	1968	2028	2071	2106	2113	2115	2096	2069	2019	1965	1945	1872	1820	1753	1700	1662	1647
15	1353	1425	1484	1540	1593	1624	1627	1632	1611	1581	1533	1483	1447	1380	1318	1257	1198	1160	1149
20	925	984	1036	1087	1130	1153	1151	1151	1133	1113	1072	1030	1000	943	897	844	800	767	757
25	619	666	703	740	767	781	780	781	767	751	721	692	672	632	598	557	530	500	500
30	419	456	478	508	521	535	526	532	517	512	488	475	459	427	407	375	356	335	333
35	294	321	335	356	363	372	365	368	359	356	340	331	322	300	288	266	252	238	235
40	217	235	245	259	263	268	264	266	260	259	248	242	236	222	213	198	188	178	176
45	166	178	185	195	198	202	197	199	196	195	188	183	179	169	163	152	145	138	136
50	128	137	143	150	152	154	152	153	150	149	145	140	138	131	127	119	114	109	108
55	101	108	112	116	118	120	119	119	117	116	113	109	107	102	99.5	94.1	91.0	87.7	86.4
60	80.7	85.1	88.4	91.7	93.4	95.2	94.4	94.2	92.4	91.4	88.5	85.9	84.3	80.5	78.3	75.0	73.2	71.0	70.5
65	61.5	65.8	69.6	73.5	75.2	76.6	75.7	76.1	74.0	72.9	69.3	65.9	64.6	61.2	61.3	60.0	58.9	57.4	56.7
70	42.5	45.7	53.0	58.2	59.6	60.9	60.3	60.4	58.8	57.6	52.8	46.4	44.0	43.6	45.9	47.1	45.2	45.0	44.2
75	27.9	30.8	39.8	43.5	46.3	46.4	46.9	46.0	45.5	42.9	39.5	31.2	28.8	29.3	34.4	35.3	34.1	33.3	32.5
80	17.2	20.6	30.0	32.7	33.5	33.2	33.4	32.9	33.0	32.0	29.1	20.7	17.6	19.2	25.3	24.8	22.8	22.4	22.1
85	7.64	12.1	20.2	21.6	22.0	22.1	22.0	21.8	21.6	21.3	19.8	12.1	7.54	10.3	15.3	13.5	12.0	11.9	11.7
90	1.27	3.95	8.81	10.7	11.2	11.6	11.8	11.6	11.2	10.9	9.35	4.27	0.69	1.88	5.39	7.21	7.61	8.19	8.33

C Range: 0 - 360DEG  
 C Interval: 15.0DEG  
 Test Speed: HIGH  
 Temperature:25.3DEG  
 Operators:XIAOMI  
 Test Date:2023-04-21

γ Range: 0 - 90DEG  
 γ Interval: 1.0DEG  
 Test System:EVERFINE GO-3000H\_V1 SYSTEM V2.00.411  
 Humidity:65.0%  
 Test Distance:9.000m [K=1.0000]  
 Remarks:

LUMINOUS DISTRIBUTION INTENSITY DATA

Test:U:220.08V I:0.0732A P:15.072W PF:0.9353 Freq:50.00Hz Lamp Flux:1425.4x1 lm		
NAME: UN-AC220-2835-60-14-940-W16-T301-UD	TYPE:	WEIGHT:
SPEC.:	DIM.:	SERIAL No.:
MFR.:	SUR.:1000*16mm	

Table--2

UNIT: cd

C(DEG) γ (DEG)	285	300	315	330	345														
0	2433	2432	2422	2420	2421														
5	2133	2141	2151	2178	2205														
10	1638	1648	1668	1717	1766														
15	1140	1154	1172	1218	1269														
20	749	761	779	819	862														
25	488	503	509	544	573														
30	326	335	342	366	386														
35	231	237	242	259	273														
40	173	177	181	192	202														
45	134	137	140	148	155														
50	106	108	110	116	121														
55	84.9	86.3	87.6	91.9	95.4														
60	69.4	70.3	71.0	73.5	75.8														
65	56.3	57.5	57.6	58.3	58.4														
70	44.5	44.3	45.7	44.4	42.1														
75	32.9	33.5	34.5	33.8	29.0														
80	22.2	22.6	24.1	25.0	19.7														
85	11.6	11.9	12.9	15.5	11.1														
90	8.24	7.97	7.75	6.48	3.20														

C Range: 0 - 360DEG  
 C Interval: 15.0DEG  
 Test Speed: HIGH  
 Temperature:25.3DEG  
 Operators:XIAOMI  
 Test Date:2023-04-21

γ Range: 0 - 90DEG  
 γ Interval: 1.0DEG  
 Test System:EVERFINE GO-3000H\_V1 SYSTEM V2.00.411  
 Humidity:65.0%  
 Test Distance:9.000m [K=1.0000]  
 Remarks: