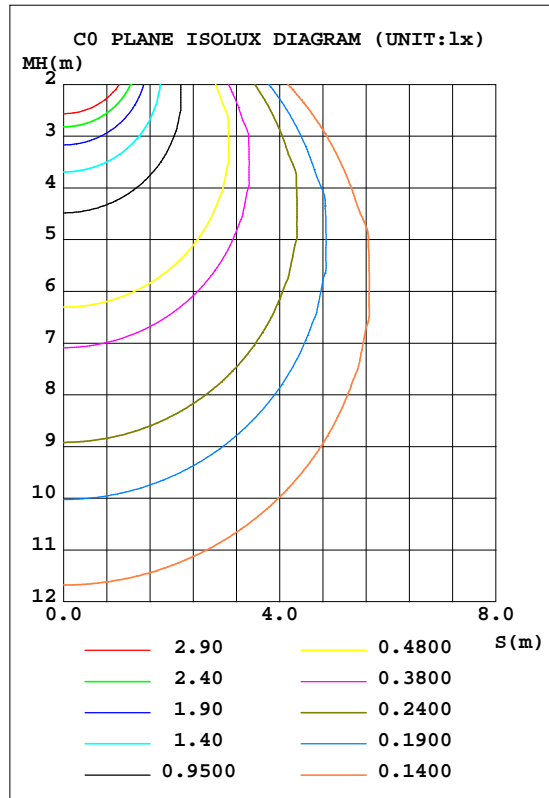
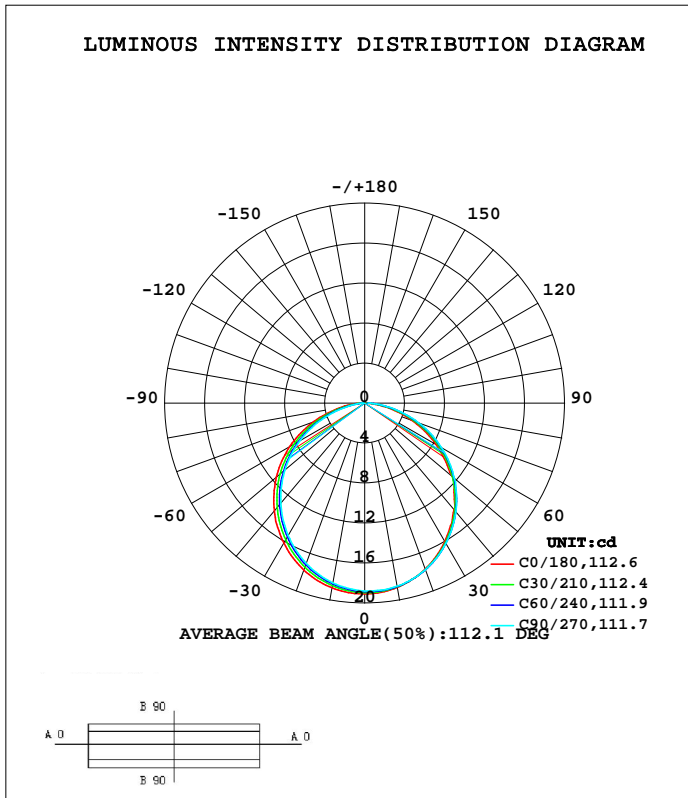


LUMINAIRE PHOTOMETRIC TEST REPORT

| | | |
|--|----------------|-------------|
| Test:U:24.146V I:0.2445A P:5.9042W PF:1.0000 Freq:50.00Hz Lamp Flux:53.4396x1 lm | | |
| NAME: UN-BJ-DMX-DC24-5050RGB-60D10S-14.4-1616-Z-IP55红光 | | WEIGHT: |
| SPEC.: | DIM.: | SERIAL No.: |
| MFR.: | SUR.:1000*16mm | |

| DATA OF LAMP | | PHOTOMETRIC DATA | | | Eff: 9.05 lm/W |
|------------------|---------|-----------------------|--------|--------------------|----------------|
| MODEL | | I _{max} (cd) | 19.09 | S/MH(C0/180) | 1.26 |
| NOMINAL POWER(W) | | LOR(%) | 100.0 | S/MH(C90/270) | 1.22 |
| RATED VOLTAGE(V) | -- | TOTAL FLUX(lm) | 53.440 | η UP, DN(C0-180) | 0.0,52.0 |
| NOMINAL FLUX(lm) | 53.4396 | CIE CLASS | DIRECT | η UP, DN(C180-360) | 0.0,48.0 |
| LAMPS INSIDE | 1 | η up(%) | 0.0 | CIBSE SHR NOM | 1.25 |
| TEST VOLTAGE(V) | -- | η down(%) | 100.0 | CIBSE SHR MAX | 1.35 |



C Range: 0 - 360DEG
 C Interval: 15.0DEG
 Test Speed: HIGH
 Temperature:25.3DEG
 Operators:XIAOMI
 Test Date:2023-04-23

γ Range: 0 - 90DEG
 γ Interval: 1.0DEG
 Test System:EVERFINE GO-3000H_V1 SYSTEM V2.00.411
 Humidity:65.0%
 Test Distance:9.000m [K=1.0000]
 Remarks:

ZONAL FLUX DIAGRAM

ZONAL FLUX DIAGRAM:

| γ | C0 | C45 | C90 | C135 | C180 | C225 | C270 | C315 | γ | Φ zone | Φ total | %lum,lamp |
|----------|-----------------------|--------|--------|--------|--------|--------|--------|--------|----------|-------------|--------------|-----------|
| 10 | 18.72 | 18.67 | 18.61 | 18.48 | 18.77 | 18.45 | 18.26 | 18.21 | 0- 10 | 1.781 | 1.781 | 3.33,3.33 |
| 20 | 17.68 | 17.74 | 17.74 | 17.59 | 17.78 | 17.33 | 17.07 | 17.09 | 10- 20 | 5.094 | 6.875 | 12.9,12.9 |
| 30 | 16.02 | 16.19 | 16.24 | 16.09 | 16.17 | 15.62 | 15.31 | 15.37 | 20- 30 | 7.707 | 14.58 | 27.3,27.3 |
| 40 | 13.90 | 14.11 | 14.20 | 14.06 | 14.07 | 13.42 | 13.06 | 13.15 | 30- 40 | 9.278 | 23.86 | 44.6,44.6 |
| 50 | 11.51 | 11.58 | 11.72 | 11.60 | 11.54 | 10.80 | 10.42 | 10.53 | 40- 50 | 9.627 | 33.49 | 62.7,62.7 |
| 60 | 8.214 | 8.681 | 8.856 | 8.765 | 8.625 | 7.837 | 7.449 | 7.577 | 50- 60 | 8.690 | 42.18 | 78.9,78.9 |
| 70 | 5.001 | 5.504 | 5.711 | 5.630 | 5.403 | 4.651 | 4.261 | 4.408 | 60- 70 | 6.587 | 48.77 | 91.3,91.3 |
| 80 | 1.877 | 2.340 | 2.546 | 2.482 | 2.305 | 1.654 | 1.371 | 1.464 | 70- 80 | 3.676 | 52.44 | 98.1,98.1 |
| 90 | 0.0752 | 0.2216 | 0.3363 | 0.3738 | 0.2997 | 0.1821 | 0.0703 | 0.0723 | 80- 90 | 0.9984 | 53.44 | 100,100 |
| 100 | | | | | | | | | 90-100 | | | |
| 110 | | | | | | | | | 100-110 | | | |
| 120 | | | | | | | | | 110-120 | | | |
| 130 | | | | | | | | | 120-130 | | | |
| 140 | | | | | | | | | 130-140 | | | |
| 150 | | | | | | | | | 140-150 | | | |
| 160 | | | | | | | | | 150-160 | | | |
| 170 | | | | | | | | | 160-170 | | | |
| 180 | | | | | | | | | 170-180 | | | |
| DEG | LUMINOUS INTENSITY:cd | | | | | | | | | UNIT:lm | | |

Conical surface Flux(90deg): 28.71 lm

%lum = 53.7%
 %lamp = 53.7%

Conical surface Flux(120deg): 42.178 lm

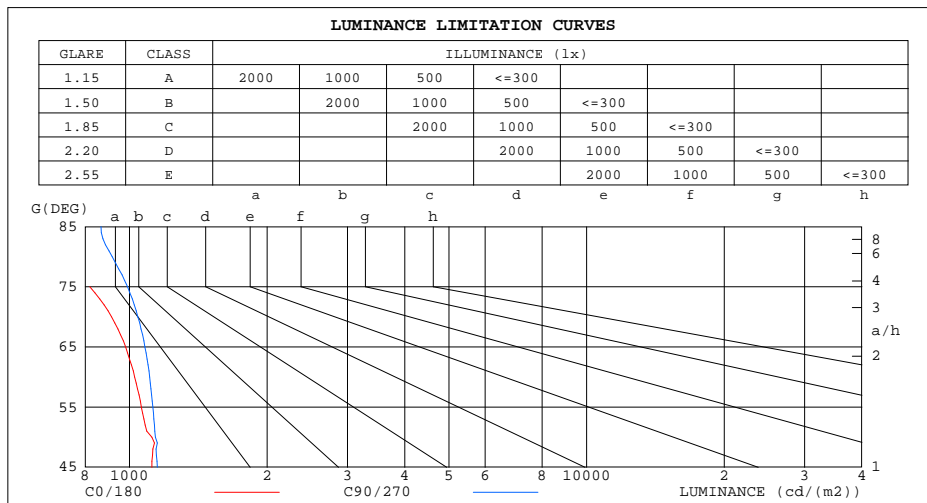
%lum = 78.9%
 %lamp = 78.9%

C Range: 0 - 360DEG
 C Interval: 15.0DEG
 Test Speed: HIGH
 Temperature:25.3DEG
 Operators:XIAOMI
 Test Date:2023-04-23

γ Range: 0 - 90DEG
 γ Interval: 1.0DEG
 Test System:EVERFINE GO-3000H_V1 SYSTEM V2.00.411
 Humidity:65.0%
 Test Distance:9.000m [K=1.0000]
 Remarks:

LUMINANCE LIMITATION CURVES

| | | |
|--|----------------|-------------|
| Test:U:24.146V I:0.2445A P:5.9042W PF:1.0000 Freq:50.00Hz Lamp Flux:53.4396x1 lm | | |
| NAME: UN-BJ-DMX-DC24-5050RGB-60D10S-14.4-1616-Z-IP55红光 | WEIGHT: | |
| SPEC.: | DIM.: | SERIAL No.: |
| MFR.: | SUR.:1000*16mm | |



| LUMINANCE cd/(m2) | | |
|-------------------|--------|---------|
| G(DEG) | C0/180 | C90/270 |
| 85 | 472 | 867 |
| 80 | 675 | 916 |
| 75 | 818 | 990 |
| 70 | 914 | 1044 |
| 65 | 980 | 1081 |
| 60 | 1027 | 1107 |
| 55 | 1062 | 1125 |
| 50 | 1119 | 1140 |
| 45 | 1120 | 1150 |

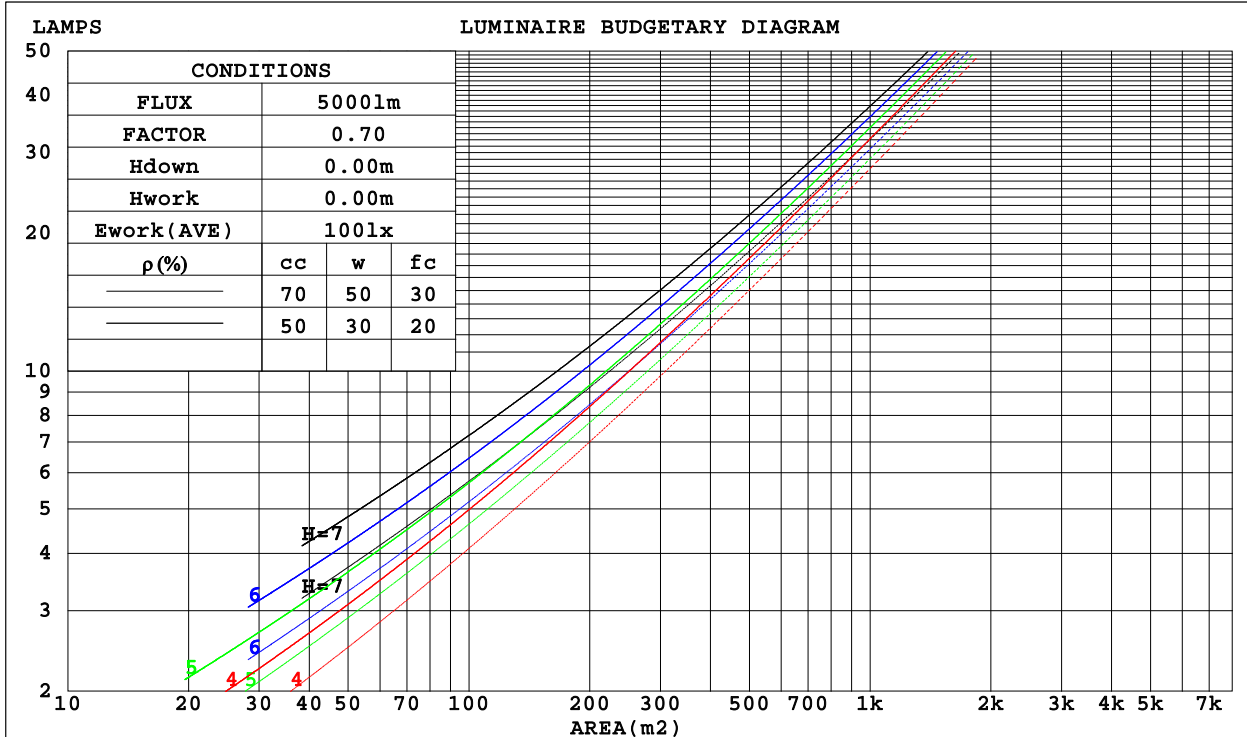
C Range: 0 - 360DEG
 C Interval: 15.0DEG
 Test Speed: HIGH
 Temperature:25.3DEG
 Operators:XIAOMI
 Test Date:2023-04-23

γ Range: 0 - 90DEG
 γ Interval: 1.0DEG
 Test System:EVERFINE GO-3000H_V1 SYSTEM V2.00.411
 Humidity:65.0%
 Test Distance:9.000m [K=1.0000]
 Remarks:

CU AND LUMINAIRE BUDGETARY ESTIMATE DIAGRAM

| | | |
|--|----------------|-------------|
| Test:U:24.146V I:0.2445A P:5.9042W PF:1.0000 Freq:50.00Hz Lamp Flux:53.4396x1 lm | | |
| NAME: UN-BJ-DMX-DC24-5050RGB-60D10S-14.4-1616-Z-IP65红光 | | WEIGHT: |
| SPEC.: | DIM.: | SERIAL No.: |
| MFR.: | SUR.:1000*16mm | |

| | | | | | | | | | | | | | | | | |
|-------------|-----------------------|------|------|------|------|------|---------------------------------|------|------|------|------|------|------|------|------|------|
| ρ_{cc} | 80% | | | 70% | | | 50% | | | 30% | | | 10% | | | 0 |
| ρ_w | 50% | 30% | 10% | 50% | 30% | 10% | 50% | 30% | 10% | 50% | 30% | 10% | 50% | 30% | 10% | 0 |
| ρ_{fc} | 20% | | | 20% | | | 20% | | | 20% | | | 20% | | | 0 |
| RCR | RCR:Room Cavity Ratio | | | | | | Coefficients of Utilization(CU) | | | | | | | | | |
| 0.0 | 1.19 | 1.19 | 1.19 | 1.16 | 1.16 | 1.16 | 1.11 | 1.11 | 1.11 | 1.06 | 1.06 | 1.06 | 1.02 | 1.02 | 1.02 | 1.00 |
| 1.0 | 1.04 | .00 | .96 | 1.02 | .98 | .94 | .97 | .94 | .91 | .93 | .91 | .88 | .90 | .88 | .86 | .84 |
| 2.0 | .91 | .84 | .78 | .89 | .82 | .77 | .85 | .80 | .75 | .82 | .77 | .73 | .79 | .75 | .72 | .70 |
| 3.0 | .79 | .71 | .65 | .78 | .70 | .64 | .75 | .68 | .63 | .72 | .66 | .62 | .69 | .65 | .61 | .59 |
| 4.0 | .70 | .61 | .55 | .69 | .61 | .54 | .66 | .59 | .54 | .64 | .58 | .53 | .62 | .57 | .52 | .50 |
| 5.0 | .63 | .54 | .47 | .62 | .53 | .47 | .60 | .52 | .46 | .58 | .51 | .46 | .56 | .50 | .45 | .43 |
| 6.0 | .56 | .47 | .41 | .56 | .47 | .41 | .54 | .46 | .40 | .52 | .45 | .40 | .50 | .44 | .40 | .38 |
| 7.0 | .51 | .42 | .36 | .50 | .42 | .36 | .49 | .41 | .36 | .47 | .41 | .36 | .46 | .40 | .35 | .33 |
| 8.0 | .47 | .38 | .32 | .46 | .38 | .32 | .45 | .37 | .32 | .43 | .37 | .32 | .42 | .36 | .32 | .30 |
| 9.0 | .43 | .35 | .29 | .42 | .34 | .29 | .41 | .34 | .29 | .40 | .33 | .29 | .39 | .33 | .28 | .27 |
| 10.0 | .40 | .32 | .26 | .39 | .31 | .26 | .38 | .31 | .26 | .37 | .31 | .26 | .36 | .30 | .26 | .24 |



C Range: 0 - 360DEG
 C Interval: 15.0DEG
 Test Speed: HIGH
 Temperature:25.3DEG
 Operators:XIAOMI
 Test Date:2023-04-23

γ Range: 0 - 90DEG
 γ Interval: 1.0DEG
 Test System:EVERFINE GO-3000H_V1 SYSTEM V2.00.411
 Humidity:65.0%
 Test Distance:9.000m [K=1.0000]
 Remarks:

WEC AND CCEC

| | | |
|--|----------------|-------------|
| Test:U:24.146V I:0.2445A P:5.9042W PF:1.0000 Freq:50.00Hz Lamp Flux:53.4396x1 lm | | |
| NAME: UN-BJ-DMX-DC24-5050RGB-60D10S-14.4-1616-Z-IP55红光 | WEIGHT: | |
| SPEC.: | DIM.: | SERIAL No.: |
| MFR.: | SUR.:1000*16mm | |

| pcc | 80% | | | 70% | | | 50% | | | 30% | | | 10% | | | 0 |
|------|-----------------------|------|------|------|------|------|---------------------------------|------|------|------|------|------|------|------|------|---|
| pw | 50% | 30% | 10% | 50% | 30% | 10% | 50% | 30% | 10% | 50% | 30% | 10% | 50% | 30% | 10% | 0 |
| pfc | 20% | | | 20% | | | 20% | | | 20% | | | 20% | | | 0 |
| RCR | RCR:Room Cavity Ratio | | | | | | Wall Exitance Coefficients(WEC) | | | | | | | | | |
| 0.0 | | | | | | | | | | | | | | | | |
| 1.0 | .309 | .176 | .056 | .302 | .172 | .055 | .289 | .166 | .053 | .277 | .159 | .051 | .265 | .154 | .050 | |
| 2.0 | .291 | .160 | .049 | .285 | .157 | .048 | .273 | .152 | .047 | .262 | .147 | .046 | .252 | .143 | .045 | |
| 3.0 | .270 | .144 | .043 | .264 | .141 | .043 | .254 | .138 | .042 | .244 | .134 | .041 | .235 | .130 | .040 | |
| 4.0 | .249 | .129 | .038 | .244 | .128 | .038 | .235 | .125 | .037 | .226 | .122 | .037 | .218 | .119 | .036 | |
| 5.0 | .230 | .117 | .034 | .226 | .116 | .034 | .218 | .113 | .033 | .210 | .111 | .033 | .203 | .109 | .033 | |
| 6.0 | .214 | .107 | .031 | .210 | .106 | .030 | .202 | .104 | .030 | .196 | .102 | .030 | .189 | .100 | .030 | |
| 7.0 | .199 | .098 | .028 | .195 | .097 | .028 | .189 | .095 | .028 | .183 | .094 | .027 | .177 | .092 | .027 | |
| 8.0 | .186 | .091 | .026 | .183 | .090 | .025 | .177 | .088 | .025 | .171 | .087 | .025 | .166 | .085 | .025 | |
| 9.0 | .174 | .084 | .024 | .171 | .083 | .023 | .166 | .082 | .023 | .161 | .081 | .023 | .157 | .080 | .023 | |
| 10.0 | .164 | .078 | .022 | .161 | .078 | .022 | .156 | .077 | .022 | .152 | .075 | .021 | .148 | .074 | .021 | |

| pcc | 80% | | | 70% | | | 50% | | | 30% | | | 10% | | | 0 |
|------|-----------------------|------|------|------|------|------|--|------|------|------|------|------|------|------|------|---|
| pw | 50% | 30% | 10% | 50% | 30% | 10% | 50% | 30% | 10% | 50% | 30% | 10% | 50% | 30% | 10% | 0 |
| pfc | 20% | | | 20% | | | 20% | | | 20% | | | 20% | | | 0 |
| RCR | RCR:Room Cavity Ratio | | | | | | Ceiling Cavity Exitance Coefficients(CCEC) | | | | | | | | | |
| 0.0 | .190 | .190 | .190 | .163 | .163 | .163 | .111 | .111 | .111 | .064 | .064 | .064 | .020 | .020 | .020 | |
| 1.0 | .180 | .156 | .134 | .154 | .134 | .116 | .105 | .092 | .080 | .061 | .053 | .047 | .019 | .017 | .015 | |
| 2.0 | .172 | .132 | .098 | .147 | .114 | .085 | .101 | .079 | .059 | .058 | .046 | .035 | .019 | .015 | .011 | |
| 3.0 | .164 | .114 | .074 | .141 | .099 | .064 | .097 | .068 | .045 | .056 | .040 | .027 | .018 | .013 | .009 | |
| 4.0 | .157 | .101 | .058 | .135 | .087 | .051 | .093 | .061 | .036 | .054 | .036 | .021 | .017 | .012 | .007 | |
| 5.0 | .149 | .091 | .047 | .128 | .078 | .041 | .088 | .055 | .029 | .051 | .032 | .017 | .016 | .010 | .006 | |
| 6.0 | .142 | .082 | .039 | .122 | .071 | .034 | .084 | .050 | .024 | .049 | .029 | .014 | .016 | .010 | .005 | |
| 7.0 | .135 | .075 | .033 | .116 | .065 | .029 | .080 | .046 | .021 | .047 | .027 | .012 | .015 | .009 | .004 | |
| 8.0 | .129 | .070 | .029 | .111 | .060 | .025 | .077 | .042 | .018 | .045 | .025 | .011 | .014 | .008 | .004 | |
| 9.0 | .123 | .065 | .025 | .106 | .056 | .022 | .073 | .039 | .016 | .043 | .023 | .009 | .014 | .008 | .003 | |
| 10.0 | .117 | .060 | .022 | .101 | .052 | .020 | .070 | .037 | .014 | .041 | .022 | .008 | .013 | .007 | .003 | |

C Range: 0 - 360DEG
 C Interval: 15.0DEG
 Test Speed: HIGH
 Temperature:25.3DEG
 Operators:XIAOMI
 Test Date:2023-04-23

γ Range: 0 - 90DEG
 γ Interval: 1.0DEG
 Test System:EVERFINE GO-3000H_V1 SYSTEM V2.00.411
 Humidity:65.0%
 Test Distance:9.000m [K=1.0000]
 Remarks:

UGR(Unified Glare Rating) Table

| | | | | | | | | | | |
|--|------------------|------|------|------|----------------|----------------|------|-------------|------|------|
| Test:U:24.146V I:0.2445A P:5.9042W PF:1.0000 Freq:50.00Hz Lamp Flux:53.4396x1 lm | | | | | | | | | | |
| NAME: UN-BJ-DMX-DC24-5050RGB-60D10S-14.4-1616-Z-IP55紅光 | | | | | WEIGHT: | | | | | |
| SPEC.: | | | | | DIM.: | | | SERIAL No.: | | |
| MFR.: | | | | | SUR.:1000*16mm | | | | | |
| ceiling/cavity | 0.7 | 0.7 | 0.5 | 0.5 | 0.3 | 0.7 | 0.7 | 0.5 | 0.5 | 0.3 |
| walls | 0.5 | 0.3 | 0.5 | 0.3 | 0.3 | 0.5 | 0.3 | 0.5 | 0.3 | 0.3 |
| working plane | 0.2 | 0.2 | 0.2 | 0.2 | 0.2 | 0.2 | 0.2 | 0.2 | 0.2 | 0.2 |
| Room dimensions | Viewed crosswise | | | | | Viewed endwise | | | | |
| x = 2H y = 2H | 13.2 | 14.8 | 13.5 | 15.0 | 15.2 | 13.5 | 15.0 | 13.8 | 15.2 | 15.4 |
| 3H | 14.7 | 16.1 | 15.0 | 16.3 | 16.6 | 15.1 | 16.5 | 15.4 | 16.8 | 17.0 |
| 4H | 15.3 | 16.6 | 15.6 | 16.9 | 17.1 | 15.8 | 17.1 | 16.1 | 17.4 | 17.6 |
| 6H | 15.6 | 16.9 | 15.9 | 17.1 | 17.4 | 16.3 | 17.6 | 16.6 | 17.8 | 18.1 |
| 8H | 15.7 | 16.9 | 16.0 | 17.2 | 17.5 | 16.5 | 17.7 | 16.8 | 18.0 | 18.3 |
| 12H | 15.7 | 16.9 | 16.1 | 17.2 | 17.5 | 16.6 | 17.8 | 16.9 | 18.0 | 18.4 |
| 4H 2H | 13.9 | 15.2 | 14.2 | 15.5 | 15.8 | 14.1 | 15.5 | 14.4 | 15.7 | 16.0 |
| 3H | 15.6 | 16.7 | 15.9 | 17.0 | 17.3 | 15.9 | 17.1 | 16.3 | 17.4 | 17.7 |
| 4H | 16.2 | 17.3 | 16.6 | 17.6 | 18.0 | 16.7 | 17.8 | 17.1 | 18.1 | 18.5 |
| 6H | 16.7 | 17.7 | 17.1 | 18.0 | 18.4 | 17.4 | 18.3 | 17.8 | 18.7 | 19.0 |
| 8H | 16.8 | 17.7 | 17.3 | 18.1 | 18.5 | 17.6 | 18.5 | 18.0 | 18.8 | 19.2 |
| 12H | 16.9 | 17.7 | 17.3 | 18.1 | 18.5 | 17.8 | 18.6 | 18.2 | 19.0 | 19.4 |
| 8H 4H | 16.6 | 17.4 | 17.0 | 17.8 | 18.2 | 17.0 | 17.9 | 17.4 | 18.2 | 18.6 |
| 6H | 17.2 | 17.9 | 17.6 | 18.3 | 18.7 | 17.8 | 18.5 | 18.2 | 18.9 | 19.3 |
| 8H | 17.4 | 18.0 | 17.8 | 18.5 | 18.9 | 18.1 | 18.7 | 18.6 | 19.2 | 19.6 |
| 12H | 17.5 | 18.1 | 18.0 | 18.5 | 19.0 | 18.4 | 18.9 | 18.8 | 19.4 | 19.8 |
| 12H 4H | 16.6 | 17.4 | 17.0 | 17.8 | 18.2 | 17.0 | 17.8 | 17.4 | 18.2 | 18.6 |
| 6H | 17.2 | 17.9 | 17.7 | 18.3 | 18.8 | 17.8 | 18.5 | 18.3 | 18.9 | 19.3 |
| 8H | 17.5 | 18.1 | 18.0 | 18.5 | 19.0 | 18.2 | 18.7 | 18.7 | 19.2 | 19.7 |
| Variations with the observer position at spacings: | | | | | | | | | | |
| S = 1.0H | + 0.2 / - 0.2 | | | | | + 0.1 / - 0.2 | | | | |
| 1.5H | + 0.2 / - 0.3 | | | | | + 0.2 / - 0.3 | | | | |
| 2.0H | + 0.2 / - 0.3 | | | | | + 0.1 / - 0.3 | | | | |

CIE Pub.117, 53.44 lm Total Lamp Luminous Flux Corrected (8log(F/F0) = -10.2)
 Area: 0.016 m2

C Range: 0 - 360DEG
 C Interval: 15.0DEG
 Test Speed: HIGH
 Temperature:25.3DEG
 Operators:XIAOMI
 Test Date:2023-04-23

γ Range: 0 - 90DEG
 γ Interval: 1.0DEG
 Test System:EVERFINE GO-3000H_V1 SYSTEM V2.00.411
 Humidity:65.0%
 Test Distance:9.000m [K=1.0000]
 Remarks:

UTILIZATION FACTORS TABLE

| | | |
|--|----------------|-------------|
| Test:U:24.146V I:0.2445A P:5.9042W PF:1.0000 Freq:50.00Hz Lamp Flux:53.4396x1 lm | | |
| NAME: UN-BJ-DMX-DC24-5050RGB-60D10S-14.4-1616-Z-IP55紅光 | WEIGHT: | |
| SPEC.: | DIM.: | SERIAL No.: |
| MFR.: | SUR.:1000*16mm | |

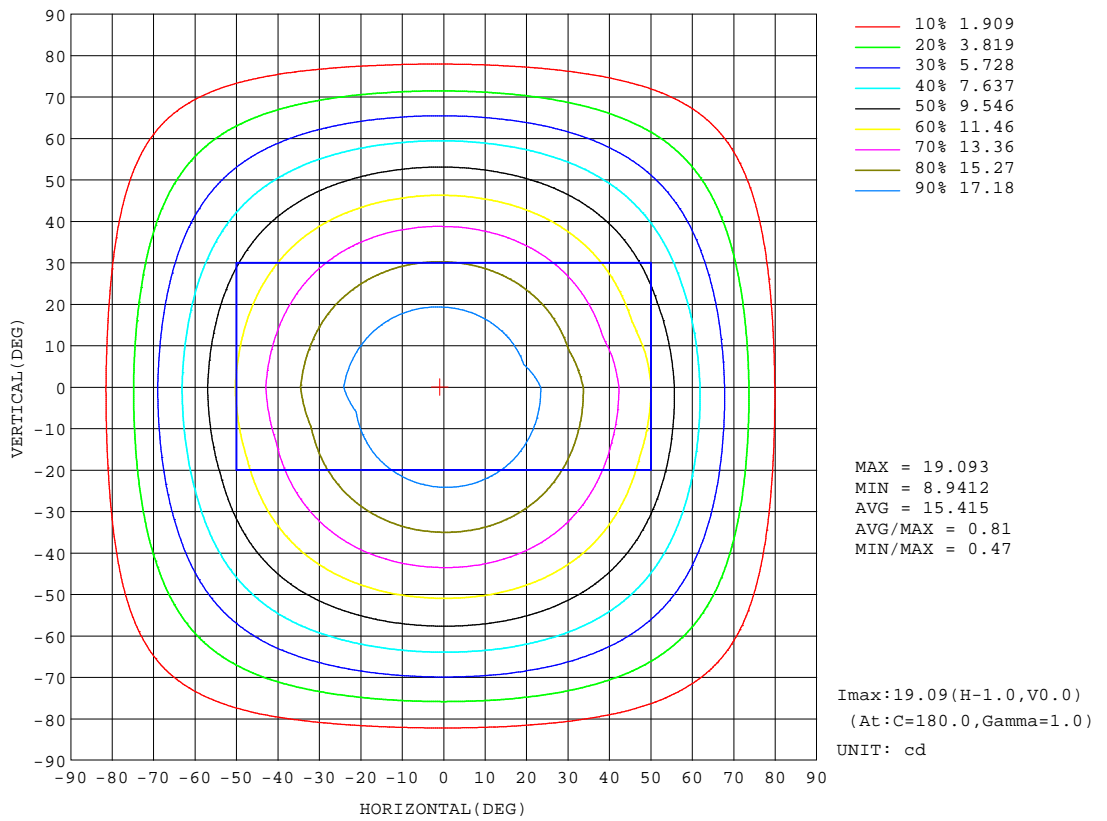
| REFLECTANCE | | | | | | | | | | |
|----------------------------------|--|-----|-----------|-----|-----|-----|---------------|-----|-----|--------|
| Ceiling | 0.8 | 0.8 | 0.8 | 0.7 | 0.7 | 0.7 | 0.5 | 0.5 | 0.5 | 0 |
| Walls | 0.7 | 0.5 | 0.3 | 0.7 | 0.5 | 0.3 | 0.7 | 0.5 | 0.3 | 0 |
| Working plane | 0.2 | 0.2 | 0.2 | 0.2 | 0.2 | 0.2 | 0.2 | 0.2 | 0.2 | 0 |
| ROOM INDEX | UTILIZATION FACTORS(PERCENT) k(RI) x RCR = 5 | | | | | | | | | |
| k = 0.60 | 58 | 46 | 39 | 57 | 46 | 39 | 56 | 45 | 39 | 32 |
| 0.80 | 68 | 56 | 49 | 67 | 56 | 48 | 65 | 55 | 48 | 41 |
| 1.00 | 76 | 65 | 58 | 75 | 64 | 57 | 73 | 66 | 57 | 50 |
| 1.25 | 83 | 73 | 65 | 82 | 72 | 65 | 79 | 70 | 64 | 57 |
| 1.50 | 88 | 78 | 71 | 86 | 77 | 71 | 83 | 76 | 70 | 62 |
| 2.00 | 95 | 86 | 80 | 93 | 85 | 79 | 90 | 83 | 78 | 70 |
| 2.50 | 99 | 91 | 85 | 97 | 90 | 84 | 93 | 87 | 82 | 74 |
| 3.00 | 102 | 95 | 90 | 100 | 94 | 89 | 96 | 91 | 87 | 78 |
| 4.00 | 106 | 101 | 96 | 104 | 99 | 95 | 100 | 95 | 92 | 83 |
| 5.00 | 109 | 104 | 100 | 106 | 102 | 98 | 102 | 98 | 95 | 86 |
| ROOM INDEX | UF(total) | | | | | | | | | Direct |
| According to DIN EN 13032-2 2004 | | | Suspended | | | | SHRNOM = 1.25 | | | |

C Range: 0 - 360DEG
 C Interval: 15.0DEG
 Test Speed: HIGH
 Temperature:25.3DEG
 Operators:XIAOMI
 Test Date:2023-04-23

γ Range: 0 - 90DEG
 γ Interval: 1.0DEG
 Test System:EVERFINE GO-3000H_V1 SYSTEM V2.00.411
 Humidity:65.0%
 Test Distance:9.000m [K=1.0000]
 Remarks:

ISOCANDELA DIAGRAM

| | | |
|--|----------------|-------------|
| Test:U:24.146V I:0.2445A P:5.9042W PF:1.0000 Freq:50.00Hz Lamp Flux:53.4396x1 lm | | |
| NAME: UN-BJ-DMX-DC24-5050RGB-60D10S-14.4-1616-Z-IP55红光 | WEIGHT: | |
| SPEC.: | DIM.: | SERIAL No.: |
| MFR.: | SUR.:1000*16mm | |



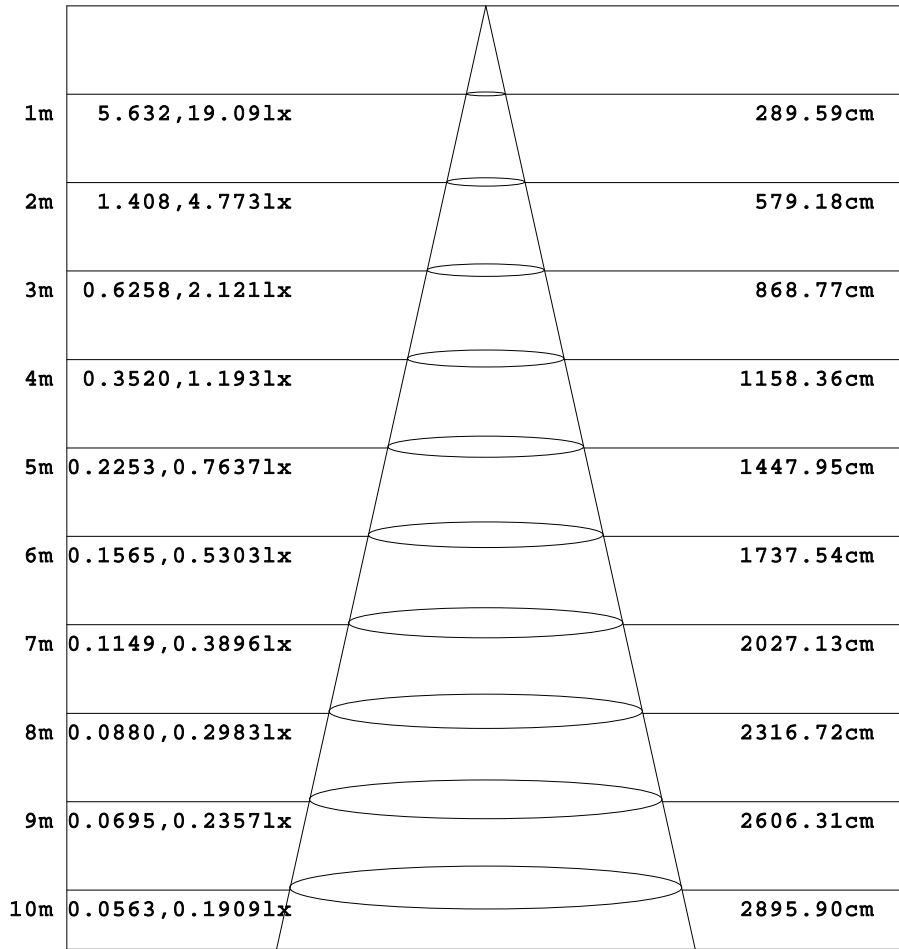
C Range: 0 - 360DEG
C Interval: 15.0DEG
Test Speed: HIGH
Temperature:25.3DEG
Operators:XIAOMI
Test Date:2023-04-23

γ Range: 0 - 90DEG
γ Interval: 1.0DEG
Test System:EVERFINE GO-3000H_V1 SYSTEM V2.00.411
Humidity:65.0%
Test Distance:9.000m [K=1.0000]
Remarks:

AAI Figure

| | | |
|--|----------------|-------------|
| Test:U:24.146V I:0.2445A P:5.9042W PF:1.0000 Freq:50.00Hz Lamp Flux:53.4396x1 lm | | |
| NAME: UN-BJ-DMX-DC24-5050RGB-60D10S-14.4-1616-Z-IP65红光 | WEIGHT: | |
| SPEC.: | DIM.: | SERIAL No.: |
| MFR.: | SUR.:1000*16mm | |

Flux out:38.89 lm



Height Eavg, Emax Angle:110.74deg Diameter

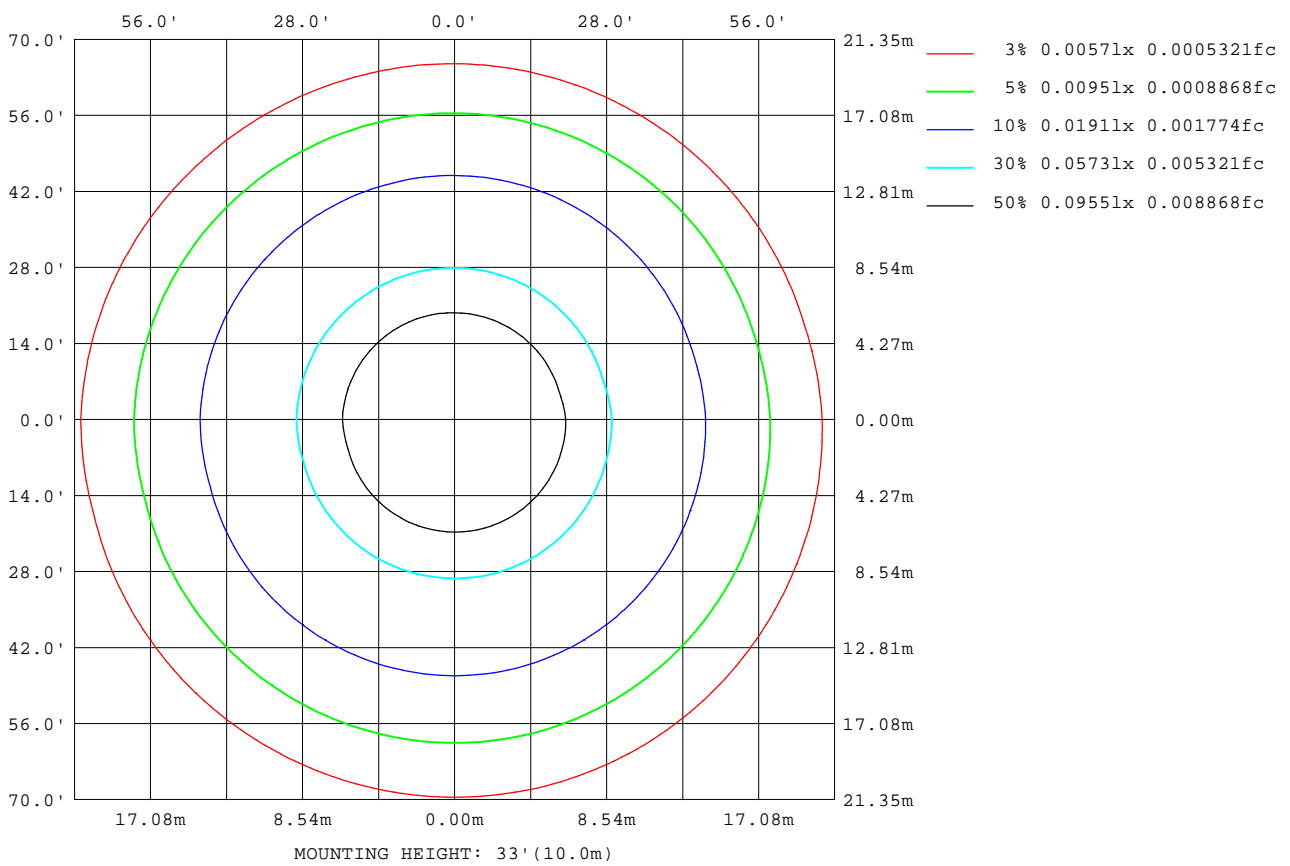
Note:The Curves indicate the illuminated area and the average illumination when the luminaire is at different distance.

C Range: 0 - 360DEG
 C Interval: 15.0DEG
 Test Speed: HIGH
 Temperature:25.3DEG
 Operators:XIAOMI
 Test Date:2023-04-23

γ Range: 0 - 90DEG
 γ Interval: 1.0DEG
 Test System:EVERFINE GO-3000H_V1 SYSTEM V2.00.411
 Humidity:65.0%
 Test Distance:9.000m [K=1.0000]
 Remarks:

ISOLUX DIAGRAM

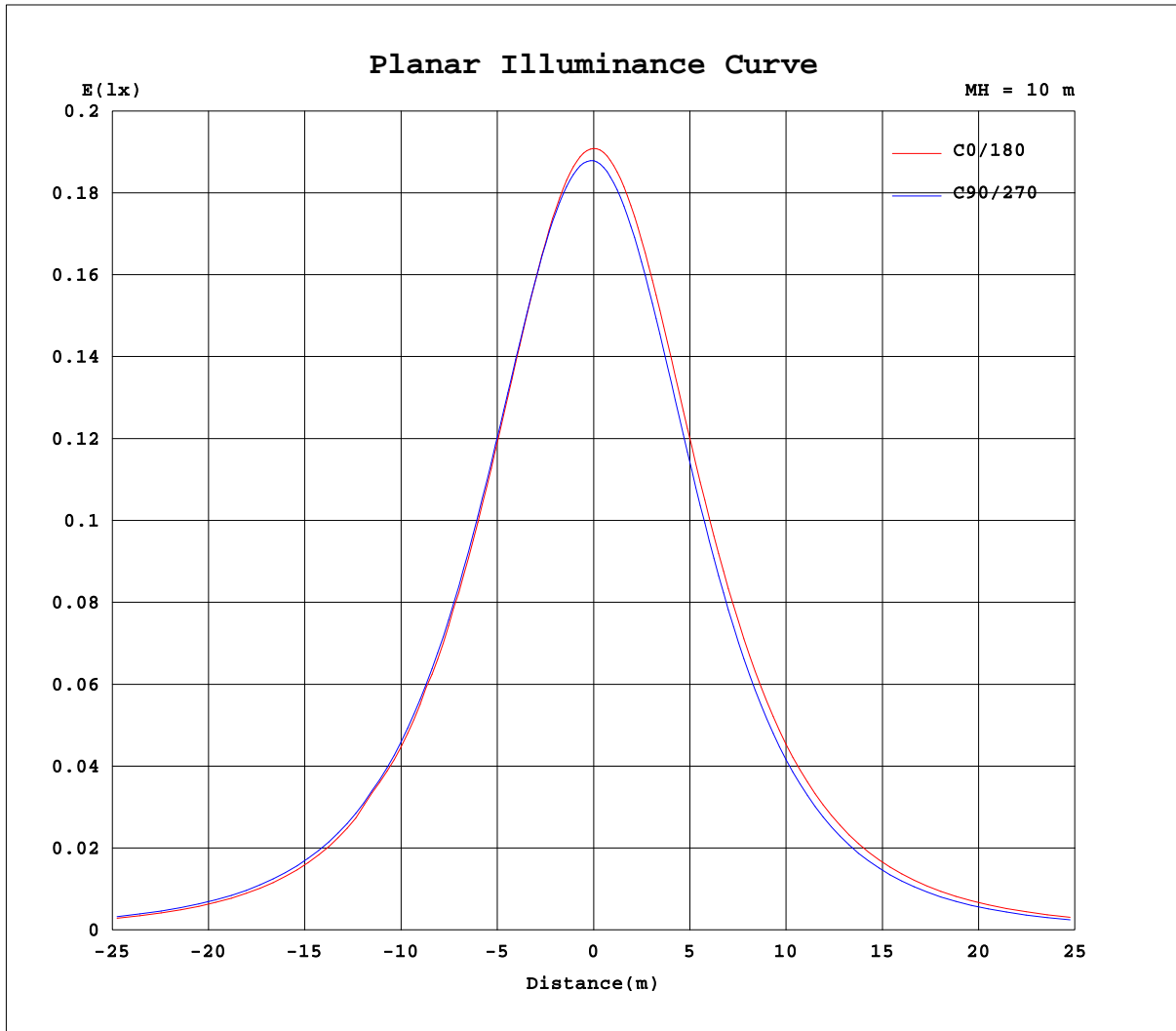
| | | |
|--|----------------|-------------|
| Test:U:24.146V I:0.2445A P:5.9042W PF:1.0000 Freq:50.00Hz Lamp Flux:53.4396x1 lm | | |
| NAME: UN-BJ-DMX-DC24-5050RGB-60D10S-14.4-1616-Z-IP55红光 | WEIGHT: | |
| SPEC.: | DIM.: | SERIAL No.: |
| MFR.: | SUR.:1000*16mm | |



C Range: 0 - 360DEG
 C Interval: 15.0DEG
 Test Speed: HIGH
 Temperature:25.3DEG
 Operators:XIAOMI
 Test Date:2023-04-23

γ Range: 0 - 90DEG
 γ Interval: 1.0DEG
 Test System:EVERFINE GO-3000H_V1 SYSTEM V2.00.411
 Humidity:65.0%
 Test Distance:9.000m [K=1.0000]
 Remarks:

Planar Illuminance Curve



C Range: 0 - 360DEG
C Interval: 15.0DEG
Test Speed: HIGH
Temperature: 25.3DEG
Operators: XIAOMI
Test Date: 2023-04-23

γ Range: 0 - 90DEG
 γ Interval: 1.0DEG
Test System: EVERFINE GO-3000H_V1 SYSTEM V2.00.411
Humidity: 65.0%
Test Distance: 9.000m [K=1.0000]
Remarks:

