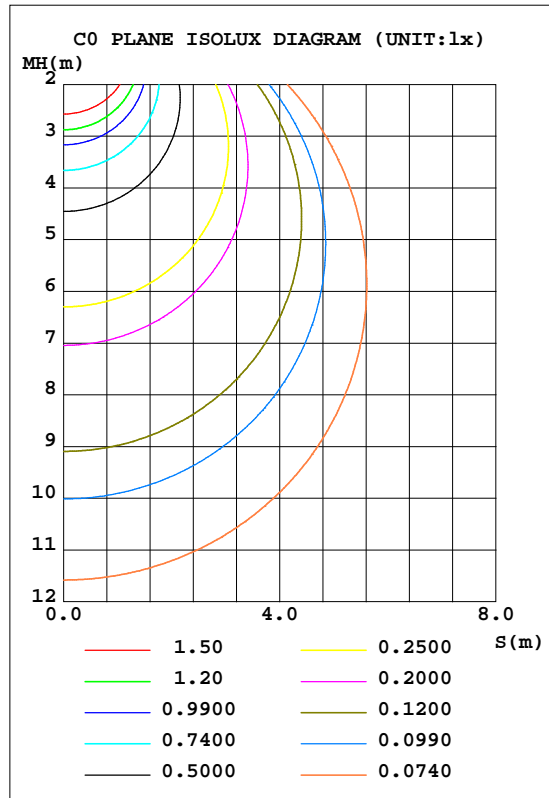
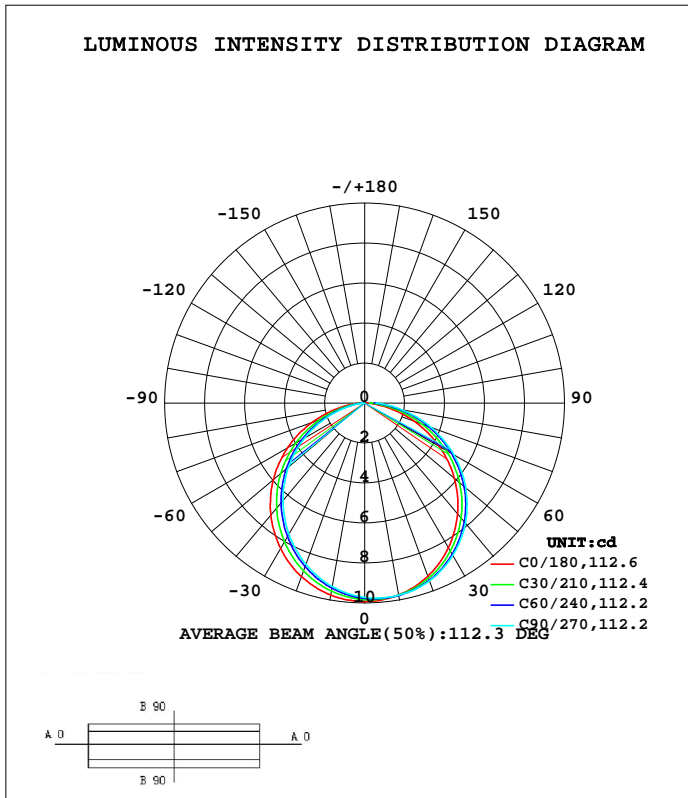


LUMINAIRE PHOTOMETRIC TEST REPORT

|  |                |             |
|--|----------------|-------------|
| Test:U:24.033V I:0.2448A P:5.8840W PF:1.0000 Freq:50.00Hz Lamp Flux:28.0558x1 lm |                |             |
| NAME: UN-BJ-DMX-DC24-5050RGB-60D10S-14.4-1220-C-IP65紅光                           | WEIGHT:        |             |
| SPEC.:   | DIM.:          | SERIAL No.: |
| MFR.:  | SUR.:1000*12mm |             |

| DATA OF LAMP     |         | PHOTOMETRIC DATA      |        |                    | Eff: 4.77 lm/W |
|------------------|---------|-----------------------|--------|--------------------|----------------|
| MODEL            |         | I <sub>max</sub> (cd) | 9.924  | S/MH(C0/180)       | 1.26           |
| NOMINAL POWER(W) |         | LOR(%)                | 100.0  | S/MH(C90/270)      | 1.17           |
| RATED VOLTAGE(V) | --      | TOTAL FLUX(lm)        | 28.056 | η UP, DN(C0-180)   | 0.0, 54.8      |
| NOMINAL FLUX(lm) | 28.0558 | CIE CLASS             | DIRECT | η UP, DN(C180-360) | 0.0, 45.2      |
| LAMPS INSIDE     | 1       | η up(%)               | 0.0    | CIBSE SHR NOM      | 1.25           |
| TEST VOLTAGE(V)  | --      | η down(%)             | 100.0  | CIBSE SHR MAX      | 1.35           |



C Range: 0 - 360DEG  
 C Interval: 15.0DEG  
 Test Speed: HIGH  
 Temperature: 25.3DEG  
 Operators: XIAOMI  
 Test Date: 2023-04-23

γ Range: 0 - 90DEG  
 γ Interval: 1.0DEG  
 Test System: EVERFINE GO-3000H\_V1 SYSTEM V2.00.411  
 Humidity: 65.0%  
 Test Distance: 9.000m [K=1.0000]  
 Remarks:

ZONAL FLUX DIAGRAM

ZONAL FLUX DIAGRAM:

| $\gamma$ | C0                    | C45    | C90    | C135   | C180   | C225   | C270   | C315   | $\gamma$ | $\Phi$ zone | $\Phi$ total | %lum,lamp |
|----------|-----------------------|--------|--------|--------|--------|--------|--------|--------|----------|-------------|--------------|-----------|
| 10       | 9.746                 | 9.763  | 9.761  | 9.618  | 9.754  | 9.467  | 9.323  | 9.305  | 0- 10    | 0.9209      | 0.9209       | 3.28,3.28 |
| 20       | 9.221                 | 9.383  | 9.463  | 9.270  | 9.240  | 8.807  | 8.589  | 8.657  | 10- 20   | 2.638       | 3.559        | 12.7,12.7 |
| 30       | 8.367                 | 8.669  | 8.806  | 8.592  | 8.409  | 7.853  | 7.580  | 7.710  | 20- 30   | 3.996       | 7.555        | 26.9,26.9 |
| 40       | 7.229                 | 7.646  | 7.846  | 7.623  | 7.303  | 6.659  | 6.366  | 6.518  | 30- 40   | 4.818       | 12.37        | 44.1,44.1 |
| 50       | 5.862                 | 6.362  | 6.612  | 6.390  | 5.969  | 5.284  | 4.982  | 5.144  | 40- 50   | 5.005       | 17.38        | 61.9,61.9 |
| 60       | 4.297                 | 4.873  | 5.138  | 4.944  | 4.443  | 3.764  | 3.449  | 3.629  | 50- 60   | 4.533       | 21.91        | 78.1,78.1 |
| 70       | 2.610                 | 3.220  | 3.520  | 3.335  | 2.773  | 2.169  | 1.896  | 2.046  | 60- 70   | 3.466       | 25.38        | 90.5,90.5 |
| 80       | 0.9853                | 1.571  | 1.855  | 1.720  | 1.157  | 0.7457 | 0.5599 | 0.6484 | 70- 80   | 2.006       | 27.38        | 97.6,97.6 |
| 90       | 0.0434                | 0.3584 | 0.5675 | 0.4972 | 0.1802 | 0.1281 | 0.0809 | 0.0809 | 80- 90   | 0.6727      | 28.06        | 100,100   |
| 100      |                       |        |        |        |        |        |        |        | 90-100   |             |              |           |
| 110      |                       |        |        |        |        |        |        |        | 100-110  |             |              |           |
| 120      |                       |        |        |        |        |        |        |        | 110-120  |             |              |           |
| 130      |                       |        |        |        |        |        |        |        | 120-130  |             |              |           |
| 140      |                       |        |        |        |        |        |        |        | 130-140  |             |              |           |
| 150      |                       |        |        |        |        |        |        |        | 140-150  |             |              |           |
| 160      |                       |        |        |        |        |        |        |        | 150-160  |             |              |           |
| 170      |                       |        |        |        |        |        |        |        | 160-170  |             |              |           |
| 180      |                       |        |        |        |        |        |        |        | 170-180  |             |              |           |
| DEG      | LUMINOUS INTENSITY:cd |        |        |        |        |        |        |        |          | UNIT:lm     |              |           |

Conical surface Flux(90deg): 14.894 lm

%lum = 53.1%  
 %lamp = 53.1%

Conical surface Flux(120deg): 21.911 lm

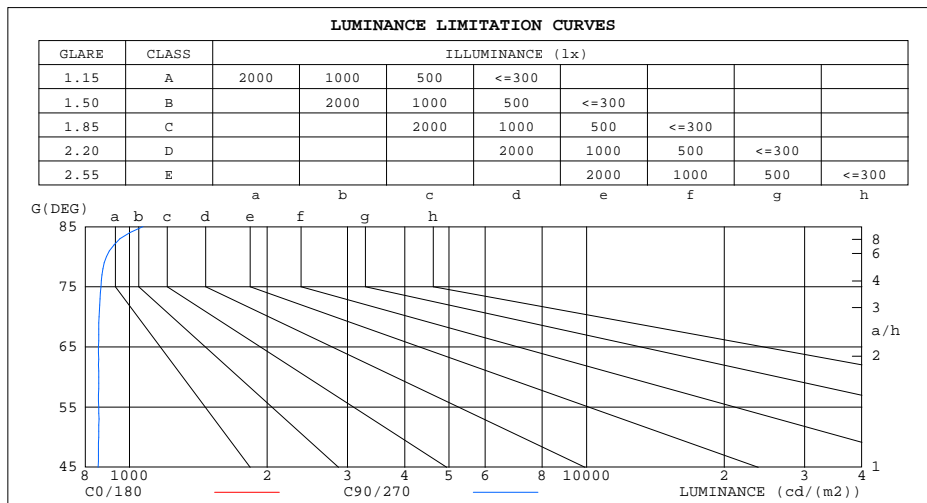
%lum = 78.1%  
 %lamp = 78.1%

C Range: 0 - 360DEG  
 C Interval: 15.0DEG  
 Test Speed: HIGH  
 Temperature:25.3DEG  
 Operators:XIAOMI  
 Test Date:2023-04-23

$\gamma$  Range: 0 - 90DEG  
 $\gamma$  Interval: 1.0DEG  
 Test System:EVERFINE GO-3000H\_V1 SYSTEM V2.00.411  
 Humidity:65.0%  
 Test Distance:9.000m [K=1.0000]  
 Remarks:

LUMINANCE LIMITATION CURVES

|  |                |             |
|--|----------------|-------------|
| Test:U:24.033V I:0.2448A P:5.8840W PF:1.0000 Freq:50.00Hz Lamp Flux:28.0558x1 lm |                |             |
| NAME: UN-BJ-DMX-DC24-5050RGB-60D10S-14.4-1220-C-IP65紅光                           | WEIGHT:        |             |
| SPEC.:   | DIM.:          | SERIAL No.: |
| MFR.:  | SUR.:1000*12mm |             |



| LUMINANCE cd/(m2) |        |         |
|-------------------|--------|---------|
| G(DEG)            | C0/180 | C90/270 |
| 85                | 343    | 1070    |
| 80                | 473    | 890     |
| 75                | 567    | 867     |
| 70                | 636    | 858     |
| 65                | 683    | 856     |
| 60                | 716    | 856     |
| 55                | 741    | 856     |
| 50                | 760    | 857     |
| 45                | 775    | 854     |

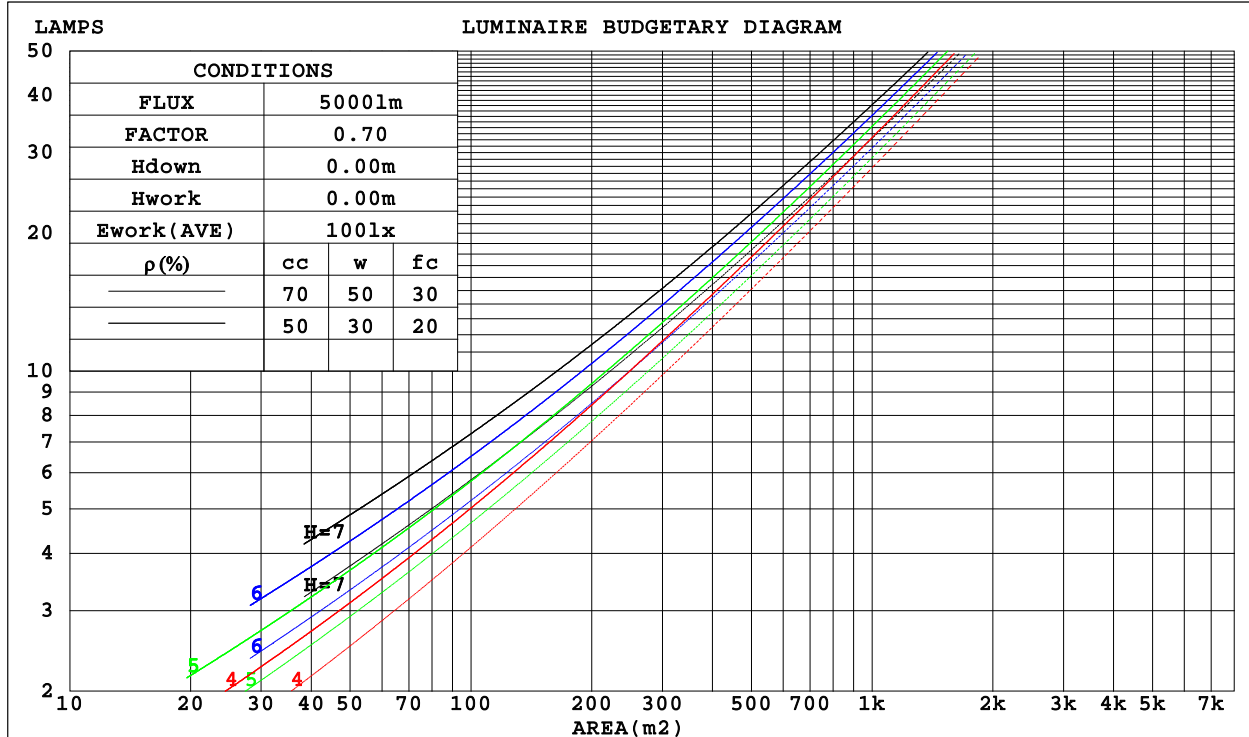
C Range: 0 - 360DEG  
 C Interval: 15.0DEG  
 Test Speed: HIGH  
 Temperature:25.3DEG  
 Operators:XIAOMI  
 Test Date:2023-04-23

γ Range: 0 - 90DEG  
 γ Interval: 1.0DEG  
 Test System:EVERFINE GO-3000H\_V1 SYSTEM V2.00.411  
 Humidity:65.0%  
 Test Distance:9.000m [K=1.0000]  
 Remarks:

CU AND LUMINAIRE BUDGETARY ESTIMATE DIAGRAM

|  |                |             |
|--|----------------|-------------|
| Test:U:24.033V I:0.2448A P:5.8840W PF:1.0000 Freq:50.00Hz Lamp Flux:28.0558x1 lm |                |             |
| NAME: UN-BJ-DMX-DC24-5050RGB-60D10S-14.4-1220-C-IP65红光                           |                | WEIGHT:     |
| SPEC.:   | DIM.:          | SERIAL No.: |
| MFR.:  | SUR.:1000*12mm |             |

| ρ <sub>cc</sub> | 80%                   |      |      | 70%  |      |      | 50%                             |      |      | 30%  |      |      | 10%  |      |      | 0    |
|-----------------|-----------------------|------|------|------|------|------|---------------------------------|------|------|------|------|------|------|------|------|------|
| ρ <sub>w</sub>  | 50%                   | 30%  | 10%  | 50%  | 30%  | 10%  | 50%                             | 30%  | 10%  | 50%  | 30%  | 10%  | 50%  | 30%  | 10%  | 0    |
| ρ <sub>fc</sub> | 20%                   |      |      | 20%  |      |      | 20%                             |      |      | 20%  |      |      | 20%  |      |      | 0    |
| RCR             | RCR:Room Cavity Ratio |      |      |      |      |      | Coefficients of Utilization(CU) |      |      |      |      |      |      |      |      |      |
| 0.0             | 1.19                  | 1.19 | 1.19 | 1.16 | 1.16 | 1.16 | 1.11                            | 1.11 | 1.11 | 1.06 | 1.06 | 1.06 | 1.02 | 1.02 | 1.02 | 1.00 |
| 1.0             | 1.04                  | .99  | .95  | 1.01 | .97  | .94  | .97                             | .94  | .91  | .93  | .90  | .88  | .89  | .87  | .85  | .83  |
| 2.0             | .90                   | .83  | .77  | .88  | .82  | .76  | .85                             | .79  | .75  | .81  | .77  | .73  | .78  | .75  | .71  | .69  |
| 3.0             | .79                   | .71  | .64  | .77  | .70  | .63  | .74                             | .68  | .62  | .72  | .66  | .61  | .69  | .64  | .60  | .58  |
| 4.0             | .70                   | .61  | .54  | .69  | .60  | .54  | .66                             | .59  | .53  | .64  | .57  | .52  | .62  | .56  | .52  | .49  |
| 5.0             | .62                   | .53  | .47  | .61  | .53  | .46  | .59                             | .52  | .46  | .57  | .51  | .45  | .55  | .49  | .45  | .43  |
| 6.0             | .56                   | .47  | .41  | .55  | .47  | .40  | .53                             | .46  | .40  | .52  | .45  | .40  | .50  | .44  | .39  | .37  |
| 7.0             | .51                   | .42  | .36  | .50  | .42  | .36  | .49                             | .41  | .35  | .47  | .40  | .35  | .46  | .40  | .35  | .33  |
| 8.0             | .46                   | .38  | .32  | .46  | .38  | .32  | .44                             | .37  | .32  | .43  | .36  | .31  | .42  | .36  | .31  | .29  |
| 9.0             | .43                   | .34  | .29  | .42  | .34  | .29  | .41                             | .34  | .28  | .40  | .33  | .28  | .39  | .33  | .28  | .26  |
| 10.0            | .39                   | .31  | .26  | .39  | .31  | .26  | .38                             | .31  | .26  | .37  | .30  | .26  | .36  | .30  | .26  | .24  |



C Range: 0 - 360DEG  
 C Interval: 15.0DEG  
 Test Speed: HIGH  
 Temperature:25.3DEG  
 Operators:XIAOMI  
 Test Date:2023-04-23

γ Range: 0 - 90DEG  
 γ Interval: 1.0DEG  
 Test System:EVERFINE GO-3000H\_V1 SYSTEM V2.00.411  
 Humidity:65.0%  
 Test Distance:9.000m [K=1.0000]  
 Remarks:

WEC AND CCEC

|  |                |             |
|--|----------------|-------------|
| Test:U:24.033V I:0.2448A P:5.8840W PF:1.0000 Freq:50.00Hz Lamp Flux:28.0558x1 lm |                |             |
| NAME: UN-BJ-DMX-DC24-5050RGB-60D10S-14.4-1220-C-IP65红光                           | WEIGHT:        |             |
| SPEC.:   | DIM.:          | SERIAL No.: |
| MFR.:  | SUR.:1000*12mm |             |

| pcc  | 80%                   |      |      | 70%  |      |      | 50%                             |      |      | 30%  |      |      | 10%  |      |      | 0 |
|------|-----------------------|------|------|------|------|------|---------------------------------|------|------|------|------|------|------|------|------|---|
| pw   | 50%                   | 30%  | 10%  | 50%  | 30%  | 10%  | 50%                             | 30%  | 10%  | 50%  | 30%  | 10%  | 50%  | 30%  | 10%  | 0 |
| pfc  | 20%                   |      |      | 20%  |      |      | 20%                             |      |      | 20%  |      |      | 20%  |      |      | 0 |
| RCR  | RCR:Room Cavity Ratio |      |      |      |      |      | Wall Exitance Coefficients(WEC) |      |      |      |      |      |      |      |      |   |
| 0.0  |                       |      |      |      |      |      |                                 |      |      |      |      |      |      |      |      |   |
| 1.0  | .316                  | .180 | .057 | .309 | .176 | .056 | .296                            | .170 | .054 | .283 | .163 | .052 | .272 | .158 | .051 |   |
| 2.0  | .295                  | .162 | .050 | .289 | .159 | .049 | .277                            | .154 | .048 | .266 | .149 | .047 | .256 | .145 | .046 |   |
| 3.0  | .272                  | .145 | .043 | .267 | .143 | .043 | .256                            | .139 | .042 | .247 | .135 | .041 | .238 | .132 | .041 |   |
| 4.0  | .251                  | .130 | .038 | .246 | .129 | .038 | .237                            | .126 | .038 | .228 | .123 | .037 | .220 | .120 | .036 |   |
| 5.0  | .232                  | .118 | .034 | .227 | .117 | .034 | .219                            | .114 | .034 | .212 | .112 | .033 | .204 | .109 | .033 |   |
| 6.0  | .215                  | .108 | .031 | .211 | .106 | .031 | .204                            | .104 | .030 | .197 | .102 | .030 | .190 | .100 | .030 |   |
| 7.0  | .200                  | .099 | .028 | .196 | .098 | .028 | .190                            | .096 | .028 | .184 | .094 | .027 | .178 | .092 | .027 |   |
| 8.0  | .186                  | .091 | .026 | .183 | .090 | .026 | .178                            | .089 | .025 | .172 | .087 | .025 | .167 | .086 | .025 |   |
| 9.0  | .175                  | .084 | .024 | .172 | .084 | .024 | .167                            | .082 | .023 | .162 | .081 | .023 | .157 | .080 | .023 |   |
| 10.0 | .164                  | .079 | .022 | .162 | .078 | .022 | .157                            | .077 | .022 | .152 | .076 | .022 | .148 | .075 | .021 |   |

| pcc  | 80%                   |      |      | 70%  |      |      | 50%  |      |      | 30%  |      |      | 10%  |      |      | 0 |
|------|-----------------------|------|------|------|------|------|--|------|------|------|------|------|------|------|------|---|
| pw   | 50%                   | 30%  | 10%  | 50%  | 30%  | 10%  | 50%  | 30%  | 10%  | 50%  | 30%  | 10%  | 50%  | 30%  | 10%  | 0 |
| pfc  | 20%                   |      |      | 20%  |      |      | 20%  |      |      | 20%  |      |      | 20%  |      |      | 0 |
| RCR  | RCR:Room Cavity Ratio |      |      |      |      |      | Ceiling Cavity Exitance Coefficients(CCEC) |      |      |      |      |      |      |      |      |   |
| 0.0  | .190                  | .190 | .190 | .163 | .163 | .163 | .111                                       | .111 | .111 | .064 | .064 | .064 | .020 | .020 | .020 |   |
| 1.0  | .181                  | .156 | .134 | .155 | .134 | .115 | .106                                       | .092 | .080 | .061 | .053 | .046 | .020 | .017 | .015 |   |
| 2.0  | .173                  | .132 | .098 | .148 | .114 | .084 | .101                                       | .079 | .059 | .058 | .046 | .034 | .019 | .015 | .011 |   |
| 3.0  | .165                  | .114 | .074 | .141 | .099 | .064 | .097                                       | .069 | .045 | .056 | .040 | .027 | .018 | .013 | .009 |   |
| 4.0  | .157                  | .101 | .058 | .135 | .087 | .050 | .093                                       | .061 | .036 | .054 | .036 | .021 | .017 | .012 | .007 |   |
| 5.0  | .150                  | .091 | .047 | .129 | .078 | .041 | .089                                       | .055 | .029 | .051 | .032 | .017 | .017 | .010 | .006 |   |
| 6.0  | .143                  | .082 | .039 | .123 | .071 | .034 | .085                                       | .050 | .024 | .049 | .029 | .014 | .016 | .010 | .005 |   |
| 7.0  | .136                  | .075 | .033 | .117 | .065 | .029 | .081                                       | .046 | .020 | .047 | .027 | .012 | .015 | .009 | .004 |   |
| 8.0  | .129                  | .070 | .029 | .111 | .060 | .025 | .077                                       | .042 | .018 | .045 | .025 | .011 | .014 | .008 | .003 |   |
| 9.0  | .123                  | .065 | .025 | .106 | .056 | .022 | .073                                       | .039 | .016 | .043 | .023 | .009 | .014 | .008 | .003 |   |
| 10.0 | .117                  | .060 | .022 | .101 | .052 | .020 | .070                                       | .037 | .014 | .041 | .022 | .008 | .013 | .007 | .003 |   |

C Range: 0 - 360DEG  
 C Interval: 15.0DEG  
 Test Speed: HIGH  
 Temperature:25.3DEG  
 Operators:XIAOMI  
 Test Date:2023-04-23

γ Range: 0 - 90DEG  
 γ Interval: 1.0DEG  
 Test System:EVERFINE GO-3000H\_V1 SYSTEM V2.00.411  
 Humidity:65.0%  
 Test Distance:9.000m [K=1.0000]  
 Remarks:

UGR(Unified Glare Rating) Table

|  |                  |      |      |      |                |                |      |             |      |      |
|--|------------------|------|------|------|----------------|----------------|------|-------------|------|------|
| Test:U:24.033V I:0.2448A P:5.8840W PF:1.0000 Freq:50.00Hz Lamp Flux:28.0558x1 lm |                  |      |      |      |                |                |      |             |      |      |
| NAME: UN-BJ-DMX-DC24-5050RGB-60D10S-14.4-1220-C-IP65紅光                           |                  |      |      |      | WEIGHT:        |                |      |             |      |      |
| SPEC.:   |                  |      |      |      | DIM.:          |                |      | SERIAL No.: |      |      |
| MFR.:  |                  |      |      |      | SUR.:1000*12mm |                |      |             |      |      |
| ceiling/cavity   | 0.7              | 0.7  | 0.5  | 0.5  | 0.3            | 0.7            | 0.7  | 0.5         | 0.5  | 0.3  |
| walls  | 0.5              | 0.3  | 0.5  | 0.3  | 0.3            | 0.5            | 0.3  | 0.5         | 0.3  | 0.3  |
| working plane  | 0.2              | 0.2  | 0.2  | 0.2  | 0.2            | 0.2            | 0.2  | 0.2         | 0.2  | 0.2  |
| Room dimensions  | Viewed crosswise |      |      |      |                | Viewed endwise |      |             |      |      |
| x = 2H y = 2H  | 12.1             | 13.7 | 12.4 | 13.9 | 14.1           | 12.8           | 14.3 | 13.1        | 14.5 | 14.7 |
| 3H   | 13.6             | 15.0 | 13.9 | 15.3 | 15.5           | 14.6           | 16.0 | 14.9        | 16.3 | 16.5 |
| 4H   | 14.2             | 15.5 | 14.5 | 15.8 | 16.0           | 15.4           | 16.8 | 15.7        | 17.0 | 17.3 |
| 6H   | 14.5             | 15.8 | 14.9 | 16.1 | 16.3           | 16.1           | 17.4 | 16.5        | 17.7 | 17.9 |
| 8H   | 14.6             | 15.8 | 14.9 | 16.1 | 16.4           | 16.4           | 17.6 | 16.8        | 17.9 | 18.2 |
| 12H  | 14.6             | 15.8 | 15.0 | 16.1 | 16.4           | 16.7           | 17.9 | 17.0        | 18.2 | 18.5 |
| 4H 2H  | 12.9             | 14.3 | 13.2 | 14.5 | 14.8           | 13.4           | 14.8 | 13.7        | 15.0 | 15.3 |
| 3H   | 14.6             | 15.8 | 14.9 | 16.1 | 16.4           | 15.4           | 16.6 | 15.8        | 16.9 | 17.2 |
| 4H   | 15.3             | 16.4 | 15.6 | 16.7 | 17.0           | 16.4           | 17.5 | 16.8        | 17.8 | 18.1 |
| 6H   | 15.8             | 16.7 | 16.2 | 17.1 | 17.4           | 17.2           | 18.2 | 17.6        | 18.6 | 18.9 |
| 8H   | 15.9             | 16.8 | 16.3 | 17.2 | 17.5           | 17.6           | 18.5 | 18.0        | 18.9 | 19.3 |
| 12H  | 16.0             | 16.8 | 16.4 | 17.2 | 17.6           | 18.0           | 18.8 | 18.4        | 19.2 | 19.6 |
| 8H 4H  | 15.7             | 16.6 | 16.1 | 17.0 | 17.3           | 16.7           | 17.6 | 17.1        | 17.9 | 18.3 |
| 6H   | 16.4             | 17.1 | 16.8 | 17.5 | 17.9           | 17.7           | 18.5 | 18.2        | 18.9 | 19.3 |
| 8H   | 16.6             | 17.3 | 17.1 | 17.7 | 18.1           | 18.2           | 18.9 | 18.7        | 19.3 | 19.7 |
| 12H  | 16.8             | 17.3 | 17.2 | 17.8 | 18.3           | 18.7           | 19.3 | 19.2        | 19.7 | 20.2 |
| 12H 4H   | 15.8             | 16.6 | 16.2 | 17.0 | 17.4           | 16.7           | 17.5 | 17.1        | 17.9 | 18.3 |
| 6H   | 16.5             | 17.2 | 17.0 | 17.6 | 18.0           | 17.8           | 18.4 | 18.2        | 18.9 | 19.3 |
| 8H   | 16.8             | 17.4 | 17.3 | 17.8 | 18.3           | 18.3           | 18.9 | 18.8        | 19.4 | 19.8 |
| Variations with the observer position at spacings:                               |                  |      |      |      |                |                |      |             |      |      |
| S = 1.0H   | + 0.2 / - 0.2    |      |      |      |                | + 0.1 / - 0.2  |      |             |      |      |
| 1.5H   | + 0.2 / - 0.4    |      |      |      |                | + 0.2 / - 0.3  |      |             |      |      |
| 2.0H   | + 0.2 / - 0.4    |      |      |      |                | + 0.1 / - 0.3  |      |             |      |      |

CIE Pub.117, 28.06 lm Total Lamp Luminous Flux Corrected (8log(F/F0) = -12.4)  
 Area: 0.012 m2

C Range: 0 - 360DEG  
 C Interval: 15.0DEG  
 Test Speed: HIGH  
 Temperature:25.3DEG  
 Operators:XIAOMI  
 Test Date:2023-04-23

γ Range: 0 - 90DEG  
 γ Interval: 1.0DEG  
 Test System:EVERFINE GO-3000H\_V1 SYSTEM V2.00.411  
 Humidity:65.0%  
 Test Distance:9.000m [K=1.0000]  
 Remarks:

UTILIZATION FACTORS TABLE

|  |                |             |
|--|----------------|-------------|
| Test:U:24.033V I:0.2448A P:5.8840W PF:1.0000 Freq:50.00Hz Lamp Flux:28.0558x1 lm |                |             |
| NAME: UN-BJ-DMX-DC24-5050RGB-60D10S-14.4-1220-C-IP65紅光                           | WEIGHT:        |             |
| SPEC.:   | DIM.:          | SERIAL No.: |
| MFR.:  | SUR.:1000*12mm |             |

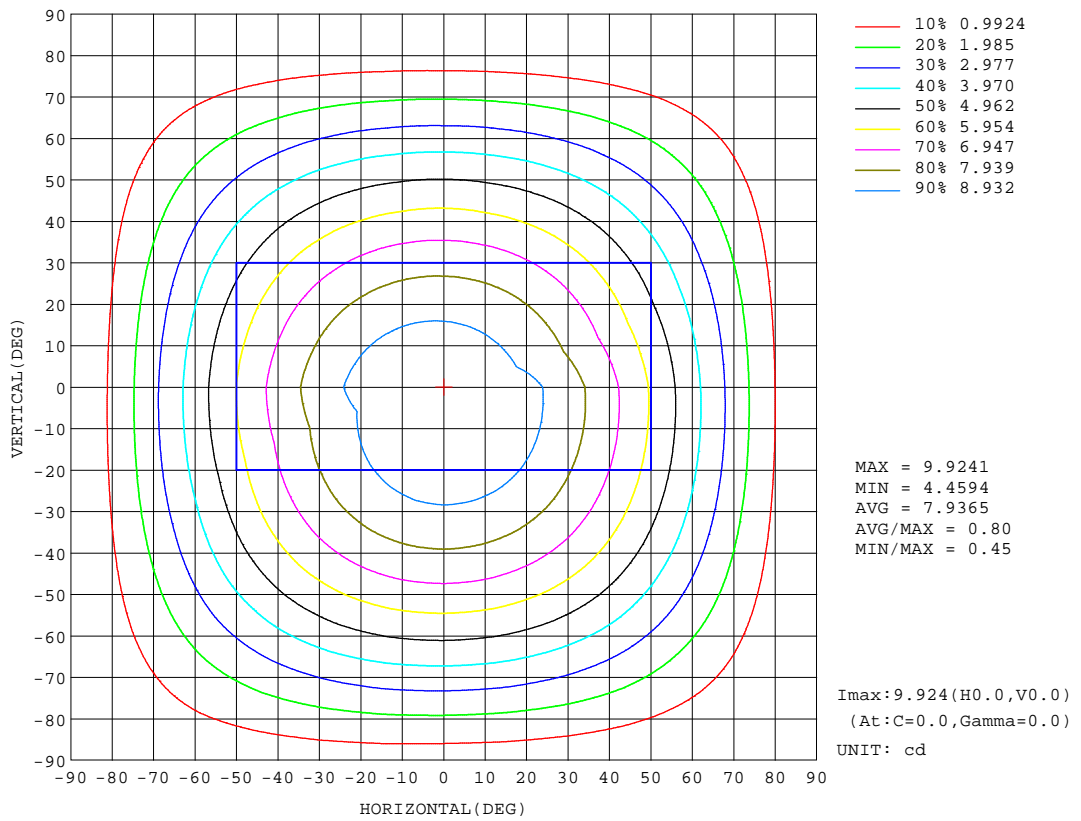
| REFLECTANCE                      |  |     |           |     |     |     |               |     |     |        |
|----------------------------------|--|-----|-----------|-----|-----|-----|---------------|-----|-----|--------|
| Ceiling                          | 0.8  | 0.8 | 0.8       | 0.7 | 0.7 | 0.7 | 0.5           | 0.5 | 0.5 | 0      |
| Walls                            | 0.7  | 0.5 | 0.3       | 0.7 | 0.5 | 0.3 | 0.7           | 0.5 | 0.3 | 0      |
| Working plane                    | 0.2  | 0.2 | 0.2       | 0.2 | 0.2 | 0.2 | 0.2           | 0.2 | 0.2 | 0      |
| ROOM INDEX                       | UTILIZATION FACTORS(PERCENT) k(RI) x RCR = 5 |     |           |     |     |     |               |     |     |        |
| k = 0.60                         | 57   | 46  | 39        | 56  | 45  | 38  | 55            | 45  | 38  | 32     |
| 0.80                             | 67   | 56  | 48        | 66  | 55  | 48  | 64            | 54  | 48  | 41     |
| 1.00                             | 76   | 64  | 57        | 74  | 64  | 57  | 72            | 65  | 56  | 49     |
| 1.25                             | 83   | 72  | 65        | 81  | 71  | 65  | 79            | 70  | 64  | 56     |
| 1.50                             | 88   | 78  | 71        | 86  | 77  | 70  | 83            | 75  | 69  | 61     |
| 2.00                             | 95   | 86  | 79        | 93  | 85  | 79  | 89            | 83  | 77  | 69     |
| 2.50                             | 99   | 91  | 85        | 96  | 89  | 84  | 93            | 87  | 82  | 73     |
| 3.00                             | 102  | 95  | 89        | 100 | 93  | 88  | 96            | 90  | 86  | 78     |
| 4.00                             | 106  | 100 | 95        | 104 | 98  | 94  | 99            | 95  | 91  | 82     |
| 5.00                             | 108  | 103 | 99        | 106 | 102 | 98  | 101           | 98  | 95  | 85     |
| ROOM INDEX                       | UF(total)                                    |     |           |     |     |     |               |     |     | Direct |
| According to DIN EN 13032-2 2004 |  |     | Suspended |     |     |     | SHRNOM = 1.25 |     |     |        |

C Range: 0 - 360DEG  
 C Interval: 15.0DEG  
 Test Speed: HIGH  
 Temperature:25.3DEG  
 Operators:XIAOMI  
 Test Date:2023-04-23

γ Range: 0 - 90DEG  
 γ Interval: 1.0DEG  
 Test System:EVERFINE GO-3000H\_V1 SYSTEM V2.00.411  
 Humidity:65.0%  
 Test Distance:9.000m [K=1.0000]  
 Remarks:

ISOCANDELA DIAGRAM

|  |                |             |
|--|----------------|-------------|
| Test:U:24.033V I:0.2448A P:5.8840W PF:1.0000 Freq:50.00Hz Lamp Flux:28.0558x1 lm |                |             |
| NAME: UN-BJ-DMX-DC24-5050RGB-60D10S-14.4-1220-C-IP55紅光                           | WEIGHT:        |             |
| SPEC.:   | DIM.:          | SERIAL No.: |
| MFR.:  | SUR.:1000*12mm |             |



C Range: 0 - 360DEG  
 C Interval: 15.0DEG  
 Test Speed: HIGH  
 Temperature:25.3DEG  
 Operators:XIAOMI  
 Test Date:2023-04-23

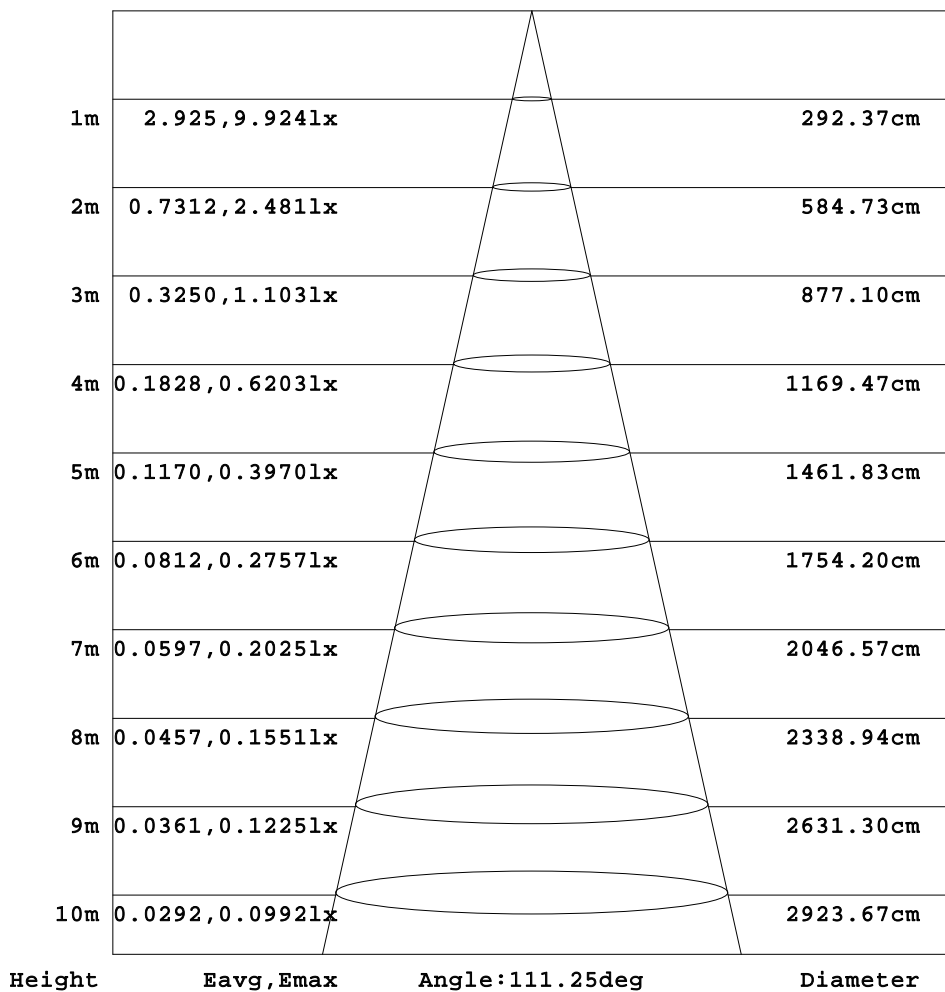
γ Range: 0 - 90DEG  
 γ Interval: 1.0DEG  
 Test System:EVERFINE GO-3000H\_V1 SYSTEM V2.00.411  
 Humidity:65.0%  
 Test Distance:9.000m [K=1.0000]  
 Remarks:



AAI Figure

|  |                |             |
|--|----------------|-------------|
| Test:U:24.033V I:0.2448A P:5.8840W PF:1.0000 Freq:50.00Hz Lamp Flux:28.0558x1 lm |                |             |
| NAME: UN-BJ-DMX-DC24-5050RGB-60D10S-14.4-1220-C-IP65红光                           | WEIGHT:        |             |
| SPEC.:   | DIM.:          | SERIAL No.: |
| MFR.:  | SUR.:1000*12mm |             |

Flux out:20.19 lm



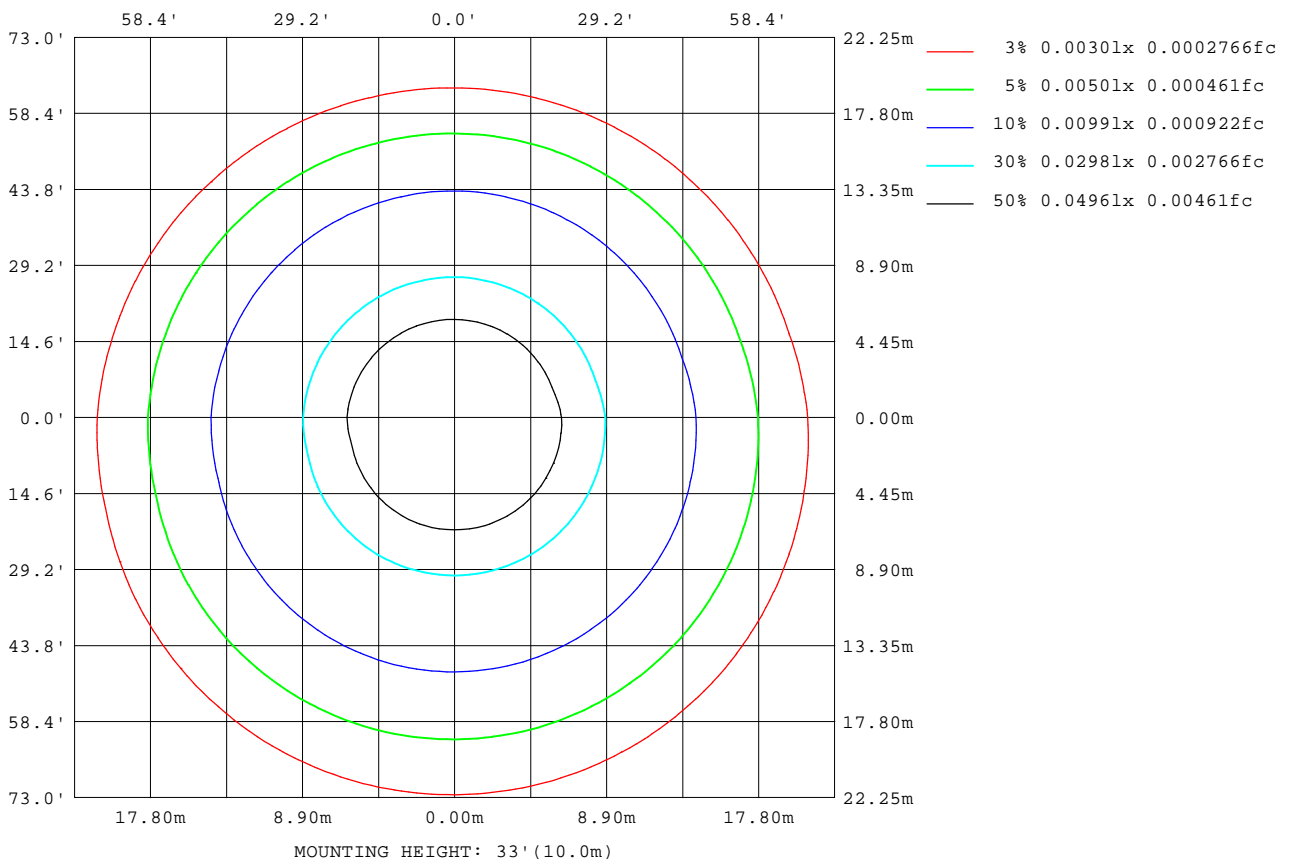
Note: The Curves indicate the illuminated area and the average illumination when the luminaire is at different distance.

C Range: 0 - 360DEG  
 C Interval: 15.0DEG  
 Test Speed: HIGH  
 Temperature: 25.3DEG  
 Operators: XIAOMI  
 Test Date: 2023-04-23

γ Range: 0 - 90DEG  
 γ Interval: 1.0DEG  
 Test System: EVERFINE GO-3000H\_V1 SYSTEM V2.00.411  
 Humidity: 65.0%  
 Test Distance: 9.000m [K=1.0000]  
 Remarks:

ISOLUX DIAGRAM

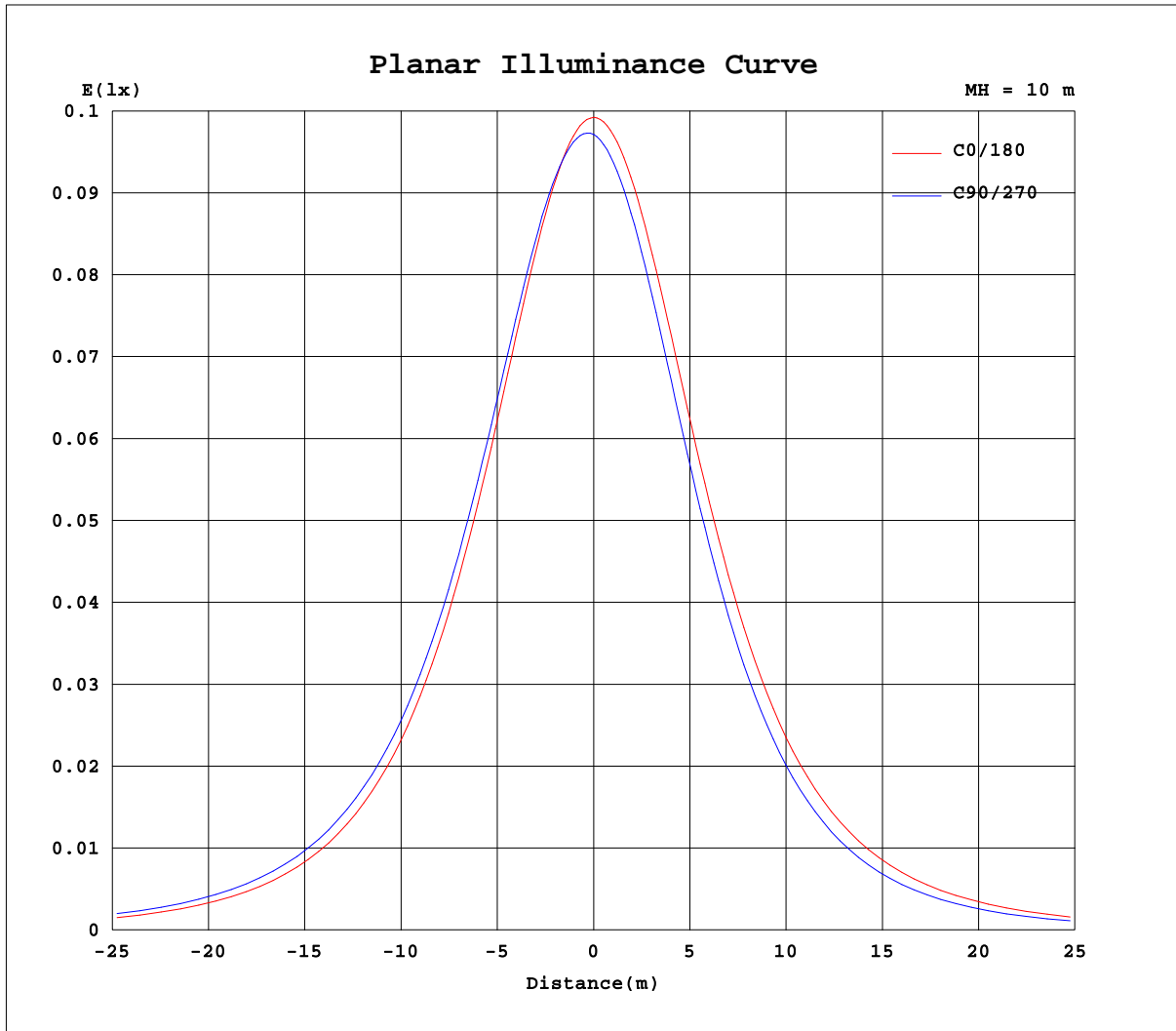
|  |                |             |
|--|----------------|-------------|
| Test:U:24.033V I:0.2448A P:5.8840W PF:1.0000 Freq:50.00Hz Lamp Flux:28.0558x1 lm |                |             |
| NAME: UN-BJ-DMX-DC24-5050RGB-60D10S-14.4-1220-C-IP65紅光                           | WEIGHT:        |             |
| SPEC.:   | DIM.:          | SERIAL No.: |
| MFR.:  | SUR.:1000*12mm |             |



C Range: 0 - 360DEG  
 C Interval: 15.0DEG  
 Test Speed: HIGH  
 Temperature: 25.3DEG  
 Operators: XIAOMI  
 Test Date: 2023-04-23

γ Range: 0 - 90DEG  
 γ Interval: 1.0DEG  
 Test System: EVERFINE GO-3000H\_V1 SYSTEM V2.00.411  
 Humidity: 65.0%  
 Test Distance: 9.000m [K=1.0000]  
 Remarks:

### Planar Illuminance Curve



C Range: 0 - 360DEG  
C Interval: 15.0DEG  
Test Speed: HIGH  
Temperature: 25.3DEG  
Operators: XIAOMI  
Test Date: 2023-04-23

$\gamma$  Range: 0 - 90DEG  
 $\gamma$  Interval: 1.0DEG  
Test System: EVERFINE GO-3000H\_V1 SYSTEM V2.00.411  
Humidity: 65.0%  
Test Distance: 9.000m [K=1.0000]  
Remarks:

LUMINOUS DISTRIBUTION INTENSITY DATA

|  |                |             |
|--|----------------|-------------|
| Test:U:24.033V I:0.2448A P:5.8840W PF:1.0000 Freq:50.00Hz Lamp Flux:28.0558x1 lm |                |             |
| NAME: UN-BJ-DMX-DC24-5050RGB-60D10S-14.4-1220-C-IP55紅光                           | WEIGHT:        |             |
| SPEC.:   | DIM.:          | SERIAL No.: |
| MFR.:  | SUR.:1000*12mm |             |

Table--1

UNIT: cd

| C(DEG)\<br>γ (DEG) | 0    | 15   | 30   | 45   | 60   | 75   | 90   | 105  | 120  | 135  | 150  | 165  | 180  | 195  | 210  | 225  | 240  | 255  | 270  |
|--------------------|------|------|------|------|------|------|------|------|------|------|------|------|------|------|------|------|------|------|------|
| 0                  | 9.92 | 9.87 | 9.83 | 9.80 | 9.77 | 9.74 | 9.72 | 9.69 | 9.67 | 9.64 | 9.61 | 9.59 | 9.92 | 9.87 | 9.83 | 9.80 | 9.77 | 9.74 | 9.72 |
| 5                  | 9.88 | 9.85 | 9.83 | 9.82 | 9.81 | 9.80 | 9.78 | 9.75 | 9.71 | 9.67 | 9.62 | 9.58 | 9.88 | 9.80 | 9.73 | 9.67 | 9.63 | 9.59 | 9.56 |
| 10                 | 9.75 | 9.74 | 9.75 | 9.76 | 9.77 | 9.77 | 9.76 | 9.73 | 9.68 | 9.62 | 9.55 | 9.48 | 9.75 | 9.64 | 9.55 | 9.47 | 9.40 | 9.36 | 9.32 |
| 15                 | 9.53 | 9.55 | 9.58 | 9.62 | 9.65 | 9.66 | 9.67 | 9.63 | 9.57 | 9.49 | 9.39 | 9.30 | 9.54 | 9.40 | 9.28 | 9.18 | 9.10 | 9.03 | 8.99 |
| 20                 | 9.22 | 9.27 | 9.33 | 9.38 | 9.43 | 9.45 | 9.46 | 9.43 | 9.36 | 9.27 | 9.16 | 9.04 | 9.24 | 9.08 | 8.94 | 8.81 | 8.70 | 8.63 | 8.59 |
| 25                 | 8.84 | 8.90 | 8.98 | 9.07 | 9.13 | 9.16 | 9.18 | 9.16 | 9.07 | 8.97 | 8.84 | 8.70 | 8.86 | 8.68 | 8.51 | 8.36 | 8.24 | 8.16 | 8.11 |
| 30                 | 8.37 | 8.46 | 8.56 | 8.67 | 8.74 | 8.79 | 8.81 | 8.78 | 8.70 | 8.59 | 8.44 | 8.28 | 8.41 | 8.21 | 8.02 | 7.85 | 7.72 | 7.63 | 7.58 |
| 35                 | 7.83 | 7.94 | 8.07 | 8.19 | 8.28 | 8.34 | 8.36 | 8.34 | 8.26 | 8.14 | 7.98 | 7.80 | 7.89 | 7.67 | 7.46 | 7.28 | 7.14 | 7.04 | 6.99 |
| 40                 | 7.23 | 7.37 | 7.50 | 7.65 | 7.75 | 7.81 | 7.85 | 7.81 | 7.75 | 7.62 | 7.45 | 7.26 | 7.30 | 7.07 | 6.86 | 6.66 | 6.51 | 6.40 | 6.37 |
| 45                 | 6.57 | 6.73 | 6.89 | 7.04 | 7.16 | 7.22 | 7.25 | 7.23 | 7.16 | 7.04 | 6.86 | 6.66 | 6.66 | 6.42 | 6.19 | 5.99 | 5.84 | 5.72 | 5.70 |
| 50                 | 5.86 | 6.02 | 6.20 | 6.36 | 6.49 | 6.57 | 6.61 | 6.59 | 6.52 | 6.39 | 6.21 | 6.00 | 5.97 | 5.72 | 5.49 | 5.28 | 5.13 | 5.01 | 4.98 |
| 55                 | 5.10 | 5.28 | 5.47 | 5.64 | 5.77 | 5.86 | 5.89 | 5.89 | 5.82 | 5.69 | 5.50 | 5.28 | 5.23 | 4.98 | 4.75 | 4.54 | 4.38 | 4.27 | 4.23 |
| 60                 | 4.30 | 4.49 | 4.69 | 4.87 | 5.01 | 5.11 | 5.14 | 5.14 | 5.07 | 4.94 | 4.76 | 4.53 | 4.44 | 4.20 | 3.97 | 3.76 | 3.61 | 3.50 | 3.45 |
| 65                 | 3.46 | 3.66 | 3.87 | 4.06 | 4.21 | 4.30 | 4.34 | 4.35 | 4.28 | 4.16 | 3.98 | 3.74 | 3.62 | 3.38 | 3.16 | 2.97 | 2.82 | 2.71 | 2.67 |
| 70                 | 2.61 | 2.81 | 3.02 | 3.22 | 3.37 | 3.48 | 3.52 | 3.53 | 3.46 | 3.33 | 3.16 | 2.93 | 2.77 | 2.55 | 2.34 | 2.17 | 2.03 | 1.93 | 1.90 |
| 75                 | 1.76 | 1.96 | 2.17 | 2.37 | 2.54 | 2.65 | 2.69 | 2.70 | 2.64 | 2.51 | 2.34 | 2.11 | 1.93 | 1.74 | 1.56 | 1.41 | 1.29 | 1.20 | 1.16 |
| 80                 | 0.99 | 1.17 | 1.36 | 1.57 | 1.71 | 1.81 | 1.85 | 1.87 | 1.82 | 1.72 | 1.57 | 1.35 | 1.16 | 0.99 | 0.86 | 0.75 | 0.65 | 0.58 | 0.56 |
| 85                 | 0.36 | 0.51 | 0.67 | 0.85 | 0.99 | 1.08 | 1.12 | 1.14 | 1.09 | 1.00 | 0.87 | 0.70 | 0.53 | 0.42 | 0.34 | 0.28 | 0.24 | 0.20 | 0.19 |
| 90                 | 0.04 | 0.12 | 0.23 | 0.36 | 0.46 | 0.54 | 0.57 | 0.58 | 0.56 | 0.50 | 0.41 | 0.29 | 0.18 | 0.16 | 0.15 | 0.13 | 0.11 | 0.09 | 0.08 |

C Range: 0 - 360DEG  
 C Interval: 15.0DEG  
 Test Speed: HIGH  
 Temperature:25.3DEG  
 Operators:XIAOMI  
 Test Date:2023-04-23

γ Range: 0 - 90DEG  
 γ Interval: 1.0DEG  
 Test System:EVERFINE GO-3000H\_V1 SYSTEM V2.00.411  
 Humidity:65.0%  
 Test Distance:9.000m [K=1.0000]  
 Remarks:

LUMINOUS DISTRIBUTION INTENSITY DATA

|  |                |             |
|--|----------------|-------------|
| Test:U:24.033V I:0.2448A P:5.8840W PF:1.0000 Freq:50.00Hz Lamp Flux:28.0558x1 lm |                |             |
| NAME: UN-BJ-DMX-DC24-5050RGB-60D10S-14.4-1220-C-IP55紅光                           | WEIGHT:        |             |
| SPEC.:   | DIM.:          | SERIAL No.: |
| MFR.:  | SUR.:1000*12mm |             |

Table--2

UNIT: cd

| C(DEG)<br>γ (DEG) | 285  | 300  | 315  | 330  | 345  |  |  |  |  |  |  |  |  |  |  |  |  |
|-------------------|------|------|------|------|------|--|--|--|--|--|--|--|--|--|--|--|--|
| 0                 | 9.69 | 9.67 | 9.64 | 9.61 | 9.59 |  |  |  |  |  |  |  |  |  |  |  |  |
| 5                 | 9.54 | 9.53 | 9.51 | 9.51 | 9.52 |  |  |  |  |  |  |  |  |  |  |  |  |
| 10                | 9.31 | 9.30 | 9.31 | 9.33 | 9.36 |  |  |  |  |  |  |  |  |  |  |  |  |
| 15                | 8.98 | 8.99 | 9.02 | 9.06 | 9.12 |  |  |  |  |  |  |  |  |  |  |  |  |
| 20                | 8.58 | 8.61 | 8.66 | 8.72 | 8.81 |  |  |  |  |  |  |  |  |  |  |  |  |
| 25                | 8.12 | 8.15 | 8.21 | 8.30 | 8.41 |  |  |  |  |  |  |  |  |  |  |  |  |
| 30                | 7.58 | 7.63 | 7.71 | 7.82 | 7.94 |  |  |  |  |  |  |  |  |  |  |  |  |
| 35                | 7.00 | 7.05 | 7.14 | 7.27 | 7.40 |  |  |  |  |  |  |  |  |  |  |  |  |
| 40                | 6.36 | 6.42 | 6.52 | 6.65 | 6.81 |  |  |  |  |  |  |  |  |  |  |  |  |
| 45                | 5.69 | 5.75 | 5.85 | 5.99 | 6.16 |  |  |  |  |  |  |  |  |  |  |  |  |
| 50                | 4.97 | 5.04 | 5.14 | 5.29 | 5.47 |  |  |  |  |  |  |  |  |  |  |  |  |
| 55                | 4.23 | 4.29 | 4.40 | 4.55 | 4.73 |  |  |  |  |  |  |  |  |  |  |  |  |
| 60                | 3.46 | 3.52 | 3.63 | 3.78 | 3.97 |  |  |  |  |  |  |  |  |  |  |  |  |
| 65                | 2.68 | 2.74 | 2.83 | 2.99 | 3.17 |  |  |  |  |  |  |  |  |  |  |  |  |
| 70                | 1.90 | 1.95 | 2.05 | 2.19 | 2.36 |  |  |  |  |  |  |  |  |  |  |  |  |
| 75                | 1.17 | 1.22 | 1.30 | 1.42 | 1.57 |  |  |  |  |  |  |  |  |  |  |  |  |
| 80                | 0.57 | 0.59 | 0.65 | 0.73 | 0.85 |  |  |  |  |  |  |  |  |  |  |  |  |
| 85                | 0.20 | 0.21 | 0.22 | 0.24 | 0.30 |  |  |  |  |  |  |  |  |  |  |  |  |
| 90                | 0.08 | 0.08 | 0.08 | 0.07 | 0.08 |  |  |  |  |  |  |  |  |  |  |  |  |
|                   |      |      |      |      |      |  |  |  |  |  |  |  |  |  |  |  |  |
|                   |      |      |      |      |      |  |  |  |  |  |  |  |  |  |  |  |  |
|                   |      |      |      |      |      |  |  |  |  |  |  |  |  |  |  |  |  |
|                   |      |      |      |      |      |  |  |  |  |  |  |  |  |  |  |  |  |
|                   |      |      |      |      |      |  |  |  |  |  |  |  |  |  |  |  |  |
|                   |      |      |      |      |      |  |  |  |  |  |  |  |  |  |  |  |  |
|                   |      |      |      |      |      |  |  |  |  |  |  |  |  |  |  |  |  |
|                   |      |      |      |      |      |  |  |  |  |  |  |  |  |  |  |  |  |
|                   |      |      |      |      |      |  |  |  |  |  |  |  |  |  |  |  |  |
|                   |      |      |      |      |      |  |  |  |  |  |  |  |  |  |  |  |  |
|                   |      |      |      |      |      |  |  |  |  |  |  |  |  |  |  |  |  |

|                      |   |
|----------------------|---|
| C Range: 0 - 360DEG  | γ Range: 0 - 90DEG                                |
| C Interval: 15.0DEG  | γ Interval: 1.0DEG                                |
| Test Speed: HIGH     | Test System:EVERFINE GO-3000H_V1 SYSTEM V2.00.411 |
| Temperature:25.3DEG  | Humidity:65.0%                                    |
| Operators:XIAOMI     | Test Distance:9.000m [K=1.0000]                   |
| Test Date:2023-04-23 | Remarks:  |